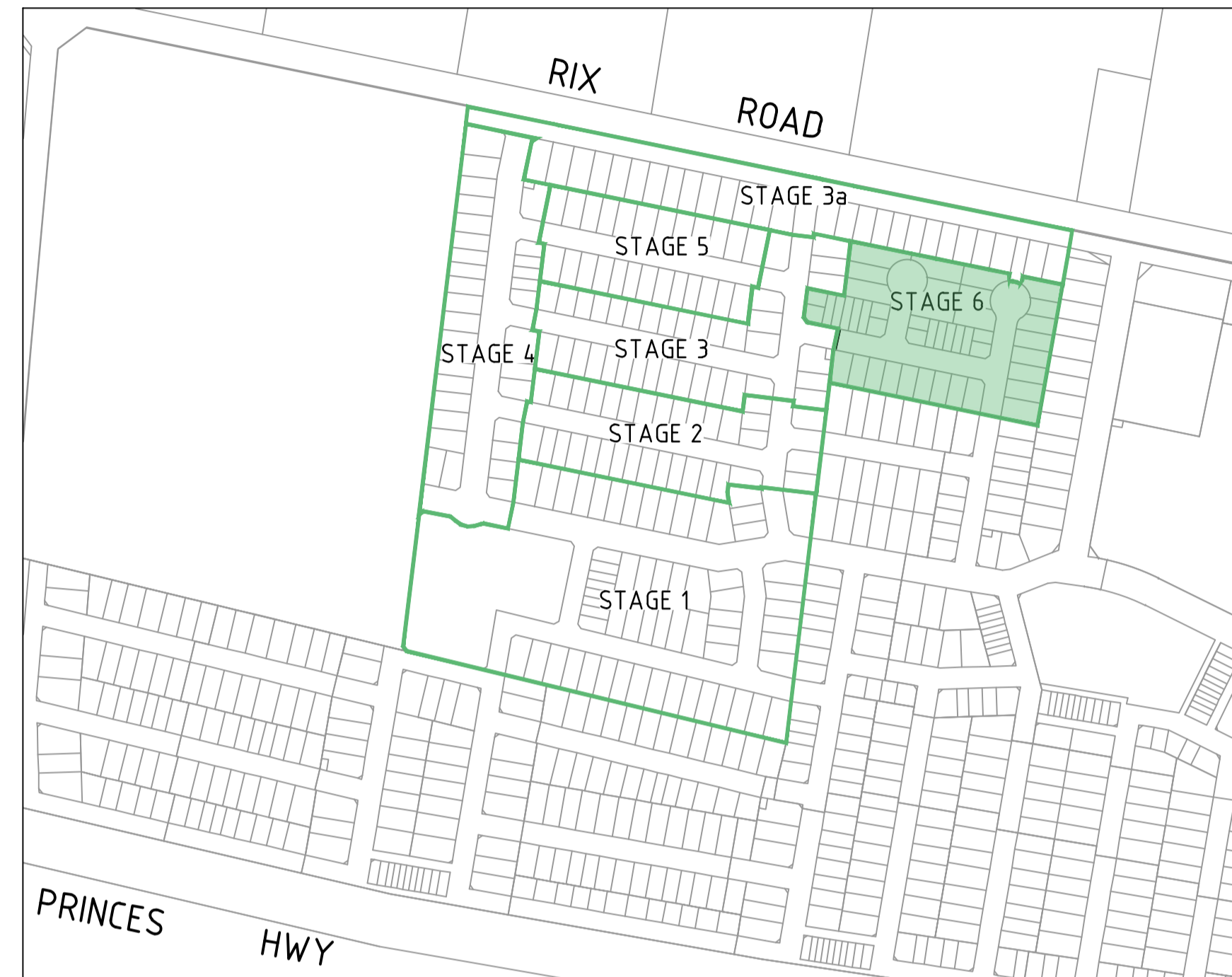


APPROVED FOR CONSTRUCTION
CARDINIA SHIRE COUNCIL
 Ref No.: S22-056 T1200411
 Sheet: 1 of 14
 Approved by: M.Patel - Dev Engineering
 CARDINIA SHIRE COUNCIL
 Date: Friday, 16 December 2022

OFFICER CENTRAL STAGE 6 YOURLAND

GENERAL NOTES:

- SURVEY**
- ALL LEVELS ARE TO AUSTRALIAN HEIGHT DATUM AND ALL COORDINATES ARE TO MAP GRID OF AUSTRALIA (MGA) 94, ZONE 55.
 - ALL EXISTING SURFACE LEVELS SHOWN ON THE ENGINEERING DRAWINGS HAVE BEEN INTERPOLATED FROM A DIGITAL TERRAIN MODEL. THESE LEVELS HAVE BEEN USED AS THE BASIS FOR ALL ENGINEERING DESIGN AND DETERMINATION OF QUANTITIES AND ARE ACCURATE TO WITHIN ±0.05m.
 - ALL WORKS TO BE CARRIED OUT IN ACCORDANCE WITH AS2124-1992 GENERAL CONDITIONS OF CONTRACT, THE ROAD & DRAINAGE SPECIFICATION, APPROVED MUNICIPALITY SPECIFICATIONS AND STANDARD DRAWINGS AND TO THE SATISFACTION OF THE SUPERINTENDENT AND THE MUNICIPAL ENGINEER OR HIS REPRESENTATIVE.
 - ROAD CHAINAGES REFER TO ROAD CENTRELINES. CHAINAGES FOR INTERSECTIONS AND CUL-DE-SACS REFER TO THE LIP OF KERB.
- EARTHWORKS**
- THE LOCATION OF EXISTING SERVICES SHOULD BE DETERMINED BY THE CONTRACTOR PRIOR TO COMMENCING ANY EXCAVATION BY CONTACTING ALL LOCAL SERVICE AUTHORITIES. ANY EXISTING SERVICES SHOWN ON THESE DRAWINGS ARE OFFERED AS A GUIDE ONLY AND ARE NOT GUARANTEED AS CORRECT.
 - WHERE REQUIRED ANY BUILDINGS, TRENCHES, FENCES AND OTHER STRUCTURES ON SITE ARE TO BE REMOVED AS DIRECTED BY THE ENGINEER. THE COST OF REMOVAL IS TO BE INCLUDED IN THE OVERALL EARTHWORKS FIGURE UNLESS A SPECIFIC ITEM FOR REMOVAL IS DENOTED IN THE SCHEDULE.
 - ALL EXCAVATED ROCK AND SURPLUS SPOIL TO BE REMOVED AND DISPOSED OFF SITE UNLESS NOTED OTHERWISE.
 - ALL FILLING ON LOTS AND WITHIN ROAD RESERVES GREATER THAN 200mm IS TO BE UNDERTAKEN USING LEVEL 1 SUPERVISION AND BE COMPLETED IN ACCORDANCE WITH AS 3798-2007. FILL AREAS ARE TO BE STRIPPED OF TOPSOIL, FILLED AND REPLACED WITH TOPSOIL (WHERE REQUIRED) TO OBTAIN THE FINAL LEVELS SHOWN ON THE DRAWINGS.
 - FILLING MATERIAL IS TO BE IN ACCORDANCE WITH THE SPECIFICATION, AS 3798-2007 & TO THE SATISFACTION OF COUNCIL AND THE SUPERINTENDENT.
 - ALL BATTERS SHALL BE 1 IN 6, UNLESS OTHERWISE SHOWN.
 - NO FILL OR STOCKPILING OF MATERIAL IS TO BE PLACED ON ANY RESERVE FOR PUBLIC OPEN SPACE UNLESS OTHERWISE DIRECTED OR APPROVED BY THE SUPERINTENDENT.
 - TBM'S TO BE RE-ESTABLISHED BY THE LICENSED SURVEYOR IF FOUND TO BE MISSING AT THE COMMENCEMENT OF CONSTRUCTION. THE CONTRACTOR WILL BE RESPONSIBLE FOR CARE AND MAINTENANCE OF T.B.M.'S THEREAFTER.
 - AT LEAST 3 DAYS PRIOR TO COMMENCING WORK ON EXCAVATIONS IN EXCESS OF 150mm DEEP, A NOTIFICATION FORM MUST BE SENT TO WORKSAFE. THE CONTRACTOR IS TO COMPLY WITH WORKSAFE, THE MINES (TRENCHES) REGULATION 1982, THE MINES ACT 1958 AND OCCUPATIONAL HEALTH AND SAFETY ACT 1985, 2004.
 - ALL SERVICE TRENCHES UNDER DRIVEWAYS, FOOTPATHS AND PARKING BAYS TO BE BACKFILLED WITH CLASS 2 CRUSHED ROCK. SERVICE TRENCHES LESS THAN 750mm BEHIND KERB AND CHANNEL OR PAVED TRAFFIC AREAS ARE ALSO TO BE BACKFILLED WITH COMPACTED CLASS 2 CRUSHED ROCK.
 - WHERE REQUIRED, ALL EXISTING DAMS, DEPRESSIONS AND DRAINS ARE TO BE BREACHED, DRAINED, DESLUDGED AND SHALL BE EXCAVATED TO A CLEAN FIRM BASE. THE SURFACE SHALL BE INSPECTED, APPROVED AND LEVELED BY THE ENGINEER PRIOR TO COMMENCEMENT OF FILLING. THE FILL SHALL BE APPROVED SELECTED ON SITE MATERIAL OR APPROVED IMPORTED MATERIAL. THE FILL SHALL BE PLACED UNDER CONTROLLED MOISTURE CONDITIONS IN ACCORDANCE WITH THE SPECIFICATION.
 - NO BLASTING TO BE CARRIED OUT WITHIN THE MUNICIPALITY WITHOUT OBTAINING COUNCIL'S PERMISSION.
- SERVICES**
- GAS AND WATER CONDUITS ARE TO BE:
 Ø50mm CLASS 12 P.V.C. - SINGLE SERVICE
 Ø100mm CLASS 12 P.V.C. - DUAL SERVICE (DRINKING AND NON DRINKING WATER)
- WITH THE FOLLOWING MINIMUM COVER TO FINISHED SURFACE LEVELS:
 ROAD PAVEMENT - 0.80m
 VERGE, FOOTPATHS - 0.45m
- LOCATION OF THE CONDUITS TO BE MARKED ON THE FACE OF KERB ON EACH SIDE OF THE ROAD WITH A 50mm HIGH LETTER (G FOR GAS, W FOR WATER, E FOR ELECTRICITY AND T FOR TELECOMMUNICATIONS).
- ALL SERVICE CONDUIT TRENCHES UNDER ROAD PAVEMENTS TO BE BACKFILLED IN ACCORDANCE WITH RELEVANT MUNICIPALITY OR ROAD AUTHORITY SPECIFICATION.
 - AG/SUBSOIL DRAIN TO BE LAID BEHIND KERB WHERE REQUIRED IN ACCORDANCE WITH THE COUNCIL STANDARD DRAWINGS AND CONNECTED TO UNDERGROUND DRAINAGE.
 - ALL STORMWATER DRAINS ARE TO BE CLASS '2' R.C. PIPES UNLESS OTHERWISE SHOWN. ALL R.C. JOINTS ARE TO BE RUBBER RING JOINTED (R.R.J.) UNLESS OTHERWISE SHOWN.
 - CENTRELINES OF ALL EASEMENT DRAINS ARE OFFSET 1.0m OR 2.3m (WHERE OUTSIDE OF SEWER) FROM THE PROPERTY LINE UNLESS SHOWN OTHERWISE.
 - WHERE CURVED PIPES ARE SHOWN ON THE FACE PLANS THEY ARE TO BE LAID PARALLEL TO THE BACK OF KERB, EXCEPT WHERE A RADIUS HAS BEEN SPECIFICALLY NOMINATED. CURVED PIPES ARE TO BE APPROVED BY COUNCIL AND IN ACCORDANCE WITH THE MANUFACTURERS SPECIFICATIONS.
 - CCTV RESULTS FOR THE FULL LENGTH OF ALL STORMWATER DRAINAGE PIPES WHERE CARDINIA SHIRE COUNCIL IS RESPONSIBLE AUTHORITY MUST BE SUBMITTED FOR ASSESSMENT. SUBMITTED INFORMATION IS TO BE TO THE SATISFACTION OF THE RESPONSIBLE AUTHORITY. CCTV FOOTAGE TO BE PROVIDED BY CONTRACTOR BEFORE THE ROADS ARE PRIMED AND / OR ASPHALTED. ALL DAMAGED PIPES UNDER ROADS MUST BE REPAIRED AND INSPECTED PRIOR TO THE PRIMING AND ASPHALTING OF THE ROAD AND BEFORE A CERTIFICATE OF PRACTICAL COMPLETION IS ISSUED.
- PAVEMENT**
- PAVEMENT DEPTHS MAY BE MODIFIED AS DIRECTED BY THE SUPERINTENDENT. PAVEMENT TO BE BOXED OUT TO MINIMUM DEPTH DENOTED, INSPECTED AND IF SUBGRADE IS IN QUESTION, FURTHER TESTING CARRIED OUT TO DETERMINE FINAL PAVEMENT DEPTH.
 - WHERE PAVEMENT IS CONSTRUCTED ON FILLING, FILL MATERIAL IS TO BE APPROVED BY THE SUPERINTENDENT AND COUNCIL. FILLING TO BE CONSTRUCTED IN LAYERS 150mm THICK WITH COMPACTION ACHIEVING 95% AUSTRALIAN STANDARD DENSITY.
 - WHEN PAVEMENT EXCAVATION IS IN ROCK ALL LOOSE MATERIAL INCLUDING ROCKS AND CLAY MUST BE REMOVED. THE SUB-GRADE MUST THEN BE REGULATED WITH COUNCIL APPROVED MATERIAL.
- SIGNAGE AND LINEMARKING**
- LINEMARKING AND SIGNAGE TO BE INSTALLED IN ACCORDANCE WITH AS 1742 SERIES UNLESS NOTED OTHERWISE. STREET SIGNS ARE TO BE INSTALLED IN ACCORDANCE WITH COUNCIL STANDARDS.
 - ALL TEMPORARY WARNING SIGNS USED DURING CONSTRUCTION SHALL BE SUPPLIED AND MAINTAINED IN ACCORDANCE WITH AS 1742-3.
 - TACTILE GROUND SURFACE INDICATORS ARE TO BE INSTALLED IN ACCORDANCE WITH THE DISABILITY DISCRIMINATION ACT AND RELEVANT COUNCIL STANDARD DRAWINGS.
- ENVIRONMENTAL**
- CONTRACTOR TO PROVIDE AN ENVIRONMENTAL MANAGEMENT PLAN INCLUDING SILT AND SEDIMENT RUNOFF PROTECTION ETC. PRIOR TO THE COMMENCEMENT OF WORKS.
 - ALL TREES AND SHRUBS ARE TO BE RETAINED UNLESS OTHERWISE SHOWN. IF ROAD AND DRAINAGE CONSTRUCTION NECESSITATES THEIR REMOVAL, WRITTEN PERMISSION MUST BE OBTAINED FROM THE SUPERINTENDENT.
 - TREES NOT SPECIFIED FOR REMOVAL ARE TO BE PROTECTED WITH APPROPRIATE EXCLUSION FENCING PRIOR TO COMMENCEMENT OF ANY WORKS.
- MISCELLANEOUS**
- PROVIDE RELEVANT STREET NUMBER MARKERS ON THE KERB IN FRONT OF EACH LOT TO THE SATISFACTION OF COUNCIL.
 - UPON COMPLETION OF THE CIVIL WORKS, THE CONTRACTOR SHALL PROVIDE AS CONSTRUCTED PLANS IN AUTOCAD, D-SPEC AND R-SPEC DIGITAL FORMAT TO COUNCIL'S REQUIREMENTS AND TO THE SATISFACTION OF ALL PARTIES.
 - HOUSE DRAIN LOCATIONS ARE TO BE STAMPED ON THE KERB FACE IN ACCORDANCE WITH VPA EDM303
 - CONTRACTOR TO REFER TO AND COMPLY WITH CHMP / F&F REPORTS PROVIDED IN CONTRACT DOCUMENTS



LOCALITY PLAN
 H 14 000
 SCALE @ A1

DRAWING SCHEDULE

DRAWING	DESCRIPTION	SHEET No.	REVISION
CR100	GENERAL NOTES	1	B
CR200	ROAD LAYOUT PLANS - FACE PLAN	2	B
CR201	ROAD LAYOUT PLANS - SERVICES PLAN	3	B
CR202	ROAD LAYOUT PLANS - EARTHWORKS PLAN	4	A
CR300	ROAD LONG SECTIONS	5	A
CR400	ROAD CROSS SECTIONS - SHEET 1	6	A
CR401	ROAD CROSS SECTIONS - SHEET 2	7	A
CR402	ROAD CROSS SECTIONS - TYPICAL SECTIONS	8	A
CR500	INTERSECTION DETAILS - SHEET 1	9	A
CR501	INTERSECTION DETAILS - SHEET 2	10	A
CR600	DRAINAGE LONG SECTIONS - SHEET 1	11	B
CR601	DRAINAGE LONG SECTIONS - SHEET 2	12	B
CR700	PAVEMENT AND TYPICAL DETAILS	13	A
CR800	SIGNAGE AND LINEMARKING	14	B



WARNING
 BEWARE OF UNDERGROUND/OVERHEAD SERVICES
 THE LOCATION OF SERVICES ARE APPROXIMATE ONLY AND THEIR EXACT POSITION SHOULD BE PROVEN ON SITE. NO GUARANTEE IS GIVEN THAT ALL EXISTING SERVICES ARE SHOWN. SPECIAL CONSIDERATION SHOULD BE GIVEN TO CONSTRUCTION PROCEDURES UNDER OVERHEAD ELECTRICITY TRANSMISSION LINES.

LEGEND

DESCRIPTION	EXISTING	PROPOSED
WATER MAIN, VALVE AND HYDRANT	DW	DW
WATER RECYCLED	NDW	NDW
UNDERGROUND ELECTRICITY	E	E
OVERHEAD ELECTRICITY & POLE	OE	OE
TELECOMMUNICATIONS & SERVICE PIT	T	T
OPTIC FIBRE	OF	OF
OVERHEAD TELECOMMUNICATIONS	OT	OT
GAS MAIN	G	G
BRANCH SEWER & MAINTENANCE STRUCTURE	S	S
SEWER & MAINTENANCE STRUCTURE	S	S
SEWER RISER MAIN	SRM	SRM
CENTRAL INVERT	>	>
COUNCIL STORMWATER DRAIN AND PIT	—	—
STORM WATER DRAINAGE PROPERTY INLETS	—	—
COUNCIL STORM WATER PITS	—	—
HOUSE DRAIN	—	—
AG DRAIN AND FLUSHER	AG	AG
MWC STORM WATER DRAIN & PIT	—	—
MWC STORM WATER PITS	—	—
STORM WATER DRAINAGE PIT NUMBER	(Ex 4.7)	(1)
GAS & WATER CONDUITS	GW	GW
CONCRETE VEHICLE CROSSING	—	—
RIDGE / CHANGE OF GRADE LINE	—	—
SURFACE CONTOUR MINOR	- 169.00 -	169.00
SURFACE CONTOUR MAJOR	- 168.90 -	168.90
SURFACE LEVEL	E123.45	F124.68
BATTER LEVEL (TOP / TOE)	T124.80	T124.80
RETAINING WALL LEVEL (TOP/BOTTOM)	TW112.76	TW128.50 BW126.74
EARTHWORKS GRADE	—	1 in 150
SIGN AND POST	—	—
LIGHT & POLE (BY OTHERS)	—	—
STREET SIGN	—	—
PERMANENT SURVEY MARK	—	—
TEMPORARY BENCH MARK	—	—
BOLLARD	—	—
ROAD CHAINAGES	CH116.57 (L/R)TP CH116.57	CH116.57 (L/R)TP CH116.57
LOT CHAINAGES	CH20.06	CH20.06
SETOUT POINT	—	A2
LIMIT OF WORKS	—	—
BATTER	—	—
EXCAVATION GREATER THAN 0.20m	—	—
FILLING GREATER THAN 0.20m	—	—
ROCK BEACHING	—	—
RETAINING WALL	—	—
FENCE - TREE PROTECTION	—	—
FENCE - VEHICLE EXCLUSION	—	—
FENCES	—	—
GUARD RAIL	—	—
TREE (& SURVEYED CANOPY) TO BE RETAINED	—	—
TREE TO BE PROTECTED	—	—
TREE TO BE REMOVED	—	—
VEGETATION LINE	—	—
FOOTPATH	—	—
TACTILE GROUND SURFACE INDICATOR	—	—
KERB TRANSITION	—	B2 SM2

file name: 309134CR100.dwg, layout: crm, c5100, d1e1d4, by: Saurabh, 14/11/2022, 4:53 PM, Sheet: 1 of 14, Sheets: 14
 file location: \\spire.com.au\abp\pda\309134CR100\ACAD\plot\pda_14/11/2022_4:53 PM_Sheet_1 of 14_Sheets_14.dwg

Rev	Amendments	Approved	Date
B	REVISED CR200, CR201, CR600, CR601 & CR800	B.W	14/11/22
A	PRELIMINARY ISSUE	B.W	28/06/22

System Certified
 © Spiire Australia Pty Ltd All Rights Reserved
 This document is produced by Spiire Australia Pty Ltd solely for the benefit of and use by the client in accordance with the terms of the retainer. Spiire Australia Pty Ltd does not and shall not assume any responsibility or liability whatsoever to any third party arising out of any use or reliance by third party on the content of this document.

16 BRIDGE STREET BENDIGO
 VICTORIA 3550 AUSTRALIA T 61 3 5448 2500
 spiire.com.au ABN 55 050 029 635

Designed
 S.SALHAN
 Authorised
 B.WAREHAM
 Checked
 B.IBBS - PE0007167
 Date
 14/11/22

**OFFICER CENTRAL
 STAGE 6
 ROAD AND DRAINAGE
 GENERAL NOTES
 CARDINIA SHIRE
 YOURLAND**
PRELIMINARY Drg No. 309134CR100 Rev B



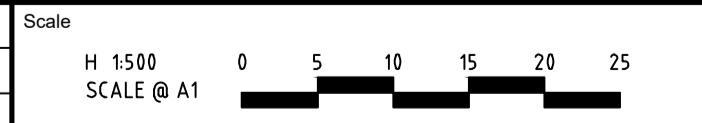
APPROVED FOR CONSTRUCTION
CARDINIA SHIRE COUNCIL
Ref No.: S22-056 T1200411
Sheet: 2 of 14
Approved by: M.Patel - Dev Engineering
CARDINIA SHIRE COUNCIL
Date: Friday, 16 December 2022



WARNING
BEWARE OF UNDERGROUND/OVERHEAD SERVICES
THE LOCATION OF SERVICES ARE APPROXIMATE ONLY AND THEIR EXACT POSITION SHOULD BE PROVEN ON SITE. NO GUARANTEE IS GIVEN THAT ALL EXISTING SERVICES ARE SHOWN. SPECIAL CONSIDERATION SHOULD BE GIVEN TO CONSTRUCTION PROCEDURES UNDER OVERHEAD ELECTRICITY TRANSMISSION LINES.

file name: 309134CR200.dwg, layout name: CR200, plotted by: Saurav, Estbr, file location: \\spire.com.au\serverdata\309134CR200\309134CR200.dwg, plot date: 14/11/2022 15:53 PM, Sheet: 2 of 14, Sheets

Rev	Amendments	Approved	Date
B	REVISED PIT 610 LOCATION	B.W	14/11/22
A	PRELIMINARY ISSUE	B.W	28/06/22

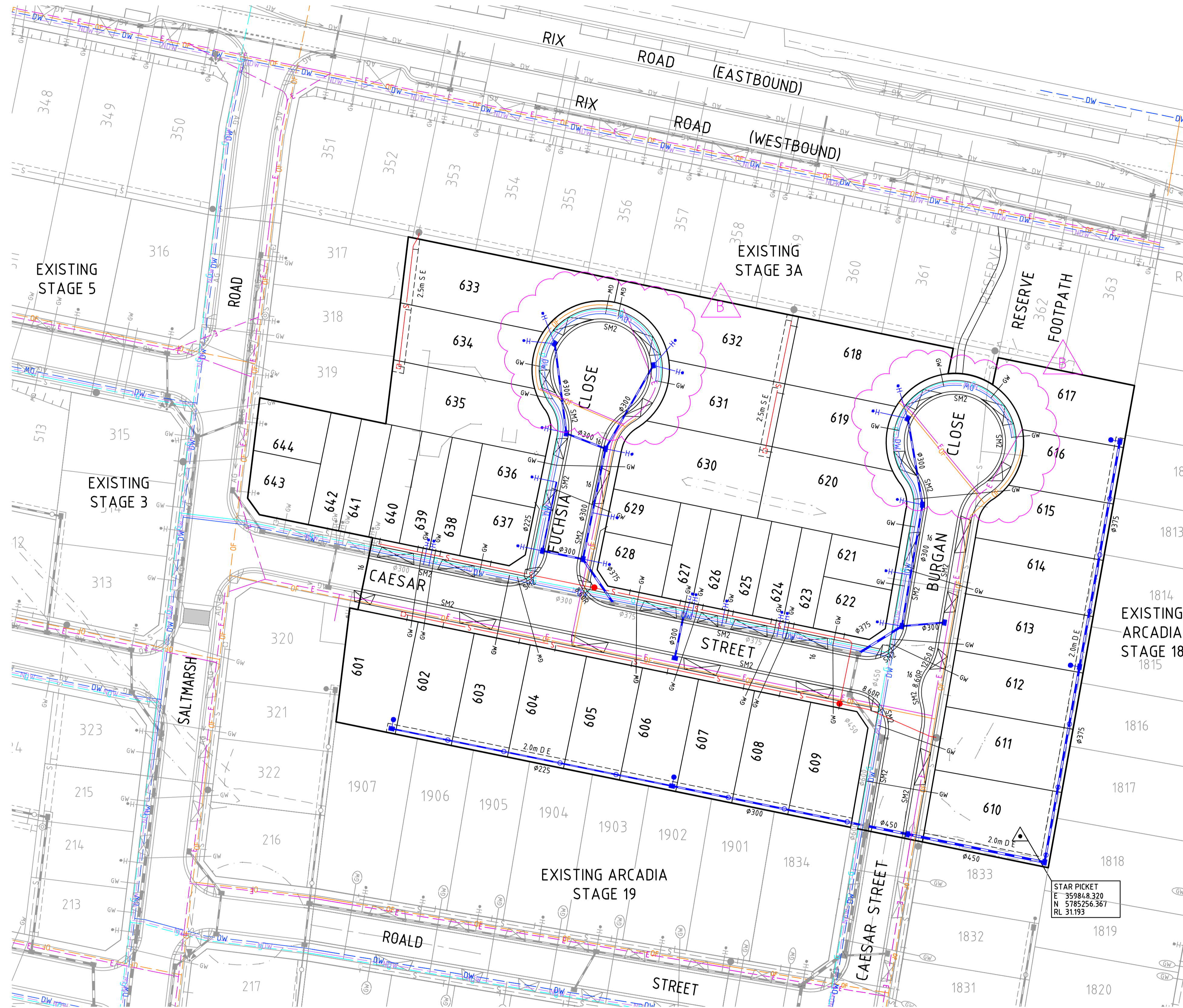


System Certified
 © Spiire Australia Pty Ltd All Rights Reserved
 This document is produced by Spiire Australia Pty Ltd solely for the benefit of and use by the client in accordance with the terms of the retainer. Spiire Australia Pty Ltd does not and shall not assume any responsibility or liability whatsoever to any third party arising out of any use or reliance by third party on the content of this document.

16 BRIDGE STREET BENDIGO
VICTORIA 3550 AUSTRALIA T 61 3 5448 2500
spiire.com.au ABN 55 050 029 635

Designed
S.SALHAN
Authorised
B.WAREHAM
Checked
B.IBBS - PE0007167
Date
14/11/22

OFFICER CENTRAL
STAGE 6
 ROAD AND DRAINAGE
 ROAD LAYOUT PLANS - FACE PLAN
 CARDINIA SHIRE
 YOURLAND
PRELIMINARY Drg No: 309134CR200 Rev: B



SERVICE LOCATION TABLE

ROAD NAME	POTABLE WATER		RECYCLED WATER		GAS		NBN (TELECOM)		ELECTRICITY			
	SIDE	OFFSET	SIDE	OFFSET	SIDE	OFFSET	SIDE	OFFSET	POLE SIDE	POLE OFFSET	U/G CABLE SIDE	U/G CABLE OFFSET
CAESAR ROAD (601-609)	N	2.837	N	2.412	N	2.017	S	1.85	E	0.9x	S	2.45
CAESAR ROAD (609-611)	W	2.55	W	2.15	W	1.75	E	1.85	E	0.9x	E	2.65
FUCHSIA CLOSE (628-630)	W	2.75	W	2.25	W	1.80	E	1.85	E	0.9x	E	2.45
BURGAN CLOSE (613-615)	W	2.55	W	2.15	W	1.75	E	1.85	E	0.9x	E	2.65

1. TELECOMMUNICATIONS AND ELECTRICITY CABLES TO BE CONSTRUCTED IN A COMMON TRENCH IN ACCORDANCE WITH ELECTRICITY AUTHORITY STANDARD DRG'S.
2. GAS AND WATER MAINS TO BE CONSTRUCTED IN A COMMON TRENCH.
3. * = OFFSET FROM BACK OF KERB

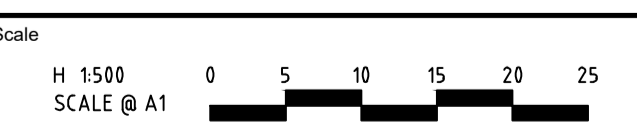
APPROVED FOR CONSTRUCTION
CARDINIA SHIRE COUNCIL
 Ref No.: S22-056 T1200411
 Sheet: 3 of 14
 Approved by: M.Patel - Dev Engineering
 CARDINIA SHIRE COUNCIL
 Date: Friday, 16 December 2022



WARNING
 BEWARE OF UNDERGROUND/OVERHEAD SERVICES
 THE LOCATION OF SERVICES ARE APPROXIMATE ONLY AND THEIR EXACT POSITION SHOULD BE PROVEN ON SITE. NO GUARANTEE IS GIVEN THAT ALL EXISTING SERVICES ARE SHOWN. SPECIAL CONSIDERATION SHOULD BE GIVEN TO CONSTRUCTION PROCEDURES UNDER OVERHEAD ELECTRICITY TRANSMISSION LINES.

file name: 309134CR201.dwg, layout: revs, CD201, plotted by: Survey, C:\Users\spire\Documents\spire\309134CR201.dwg, plot date: 14/11/2022 15:53 PM, Sheet: 3 of 14, Sheets

Rev	Amendments	Approved	Date
B	REVISED OF AND ELEC LOCATION IN COURT BOWLS	B.W	14/11/22
A	PRELIMINARY ISSUE	B.W	28/06/22



© Spiire Australia Pty Ltd All Rights Reserved
 This document is produced by Spiire Australia Pty Ltd solely for the benefit of and use by the client in accordance with the terms of the retainer. Spiire Australia Pty Ltd does not and shall not assume any responsibility or liability whatsoever to any third party arising out of any use or reliance by third party on the content of this document.





16 BRIDGE STREET BENDIGO
 VICTORIA 3550 AUSTRALIA T 61 3 5448 2500
 spiire.com.au ABN 55 050 029 635

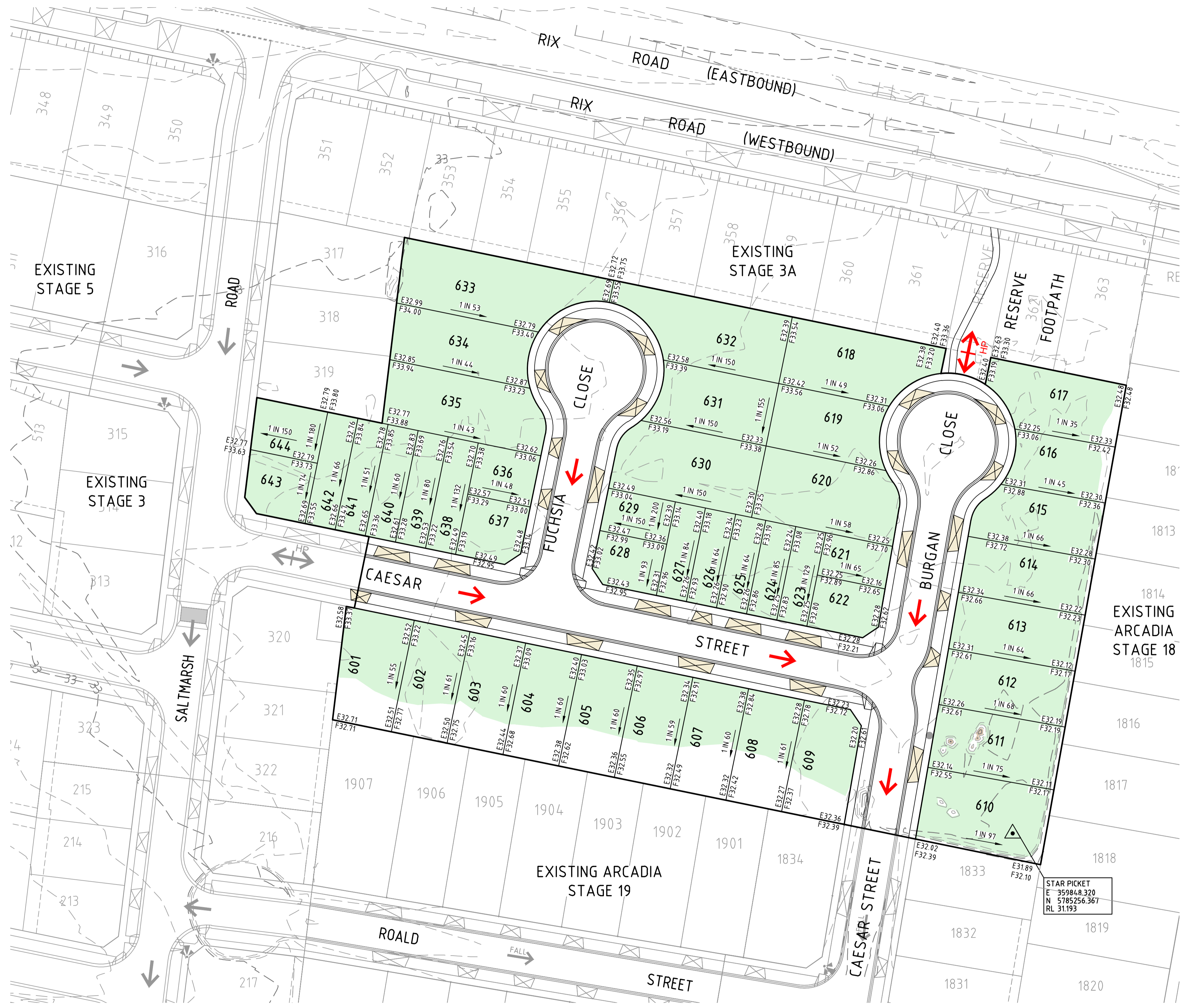


Designed: S.SALHAN
 Authorised: B.WAREHAM
 Checked: B.IBBS - PE0007167
 Date: 14/11/22

**OFFICER CENTRAL
 STAGE 6
 ROAD AND DRAINAGE
 ROAD LAYOUT PLANS - SERVICES PLAN
 CARDINIA SHIRE
 YOURLAND**

PRELIMINARY Drg No: 309134CR201 Rev: B

 FILL GREATER THAN 200mm
 CUT GREATER THAN 200mm



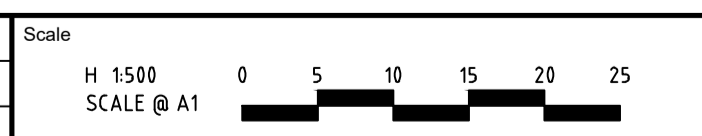
APPROVED FOR CONSTRUCTION
 CARDINIA SHIRE COUNCIL
 Ref No.: S22-056 T1200411
 Sheet: 4 of 14
 Approved by: M.Patel - Dev Engineering
 CARDINIA SHIRE COUNCIL
 Date: Friday, 16 December 2022



WARNING
 BEWARE OF UNDERGROUND/OVERHEAD SERVICES
 THE LOCATION OF SERVICES ARE APPROXIMATE ONLY AND THEIR EXACT POSITION SHOULD BE PROVEN ON SITE. NO GUARANTEE IS GIVEN THAT ALL EXISTING SERVICES ARE SHOWN. SPECIAL CONSIDERATION SHOULD BE GIVEN TO CONSTRUCTION PROCEDURES UNDER OVERHEAD ELECTRICITY TRANSMISSION LINES.

file name: 309134CR202.dwg, layout name: CR202, plotted by: Saurabh Sathar, file location: \\spire.com.au\server\projects\309134\309134.dwg, vba: 14/11/2022 15:53 PM, Sheet 4 of 14, Sheets

Rev	Description	Approved	Date
A	PRELIMINARY ISSUE	B.W	28/06/22
	Amendments		




 System Certified
 © Spiire Australia Pty Ltd All Rights Reserved
 This document is produced by Spiire Australia Pty Ltd solely for the benefit of and use by the client in accordance with the terms of the retainer. Spiire Australia Pty Ltd does not and shall not assume any responsibility or liability whatsoever to any third party arising out of any use or reliance by third party on the content of this document.



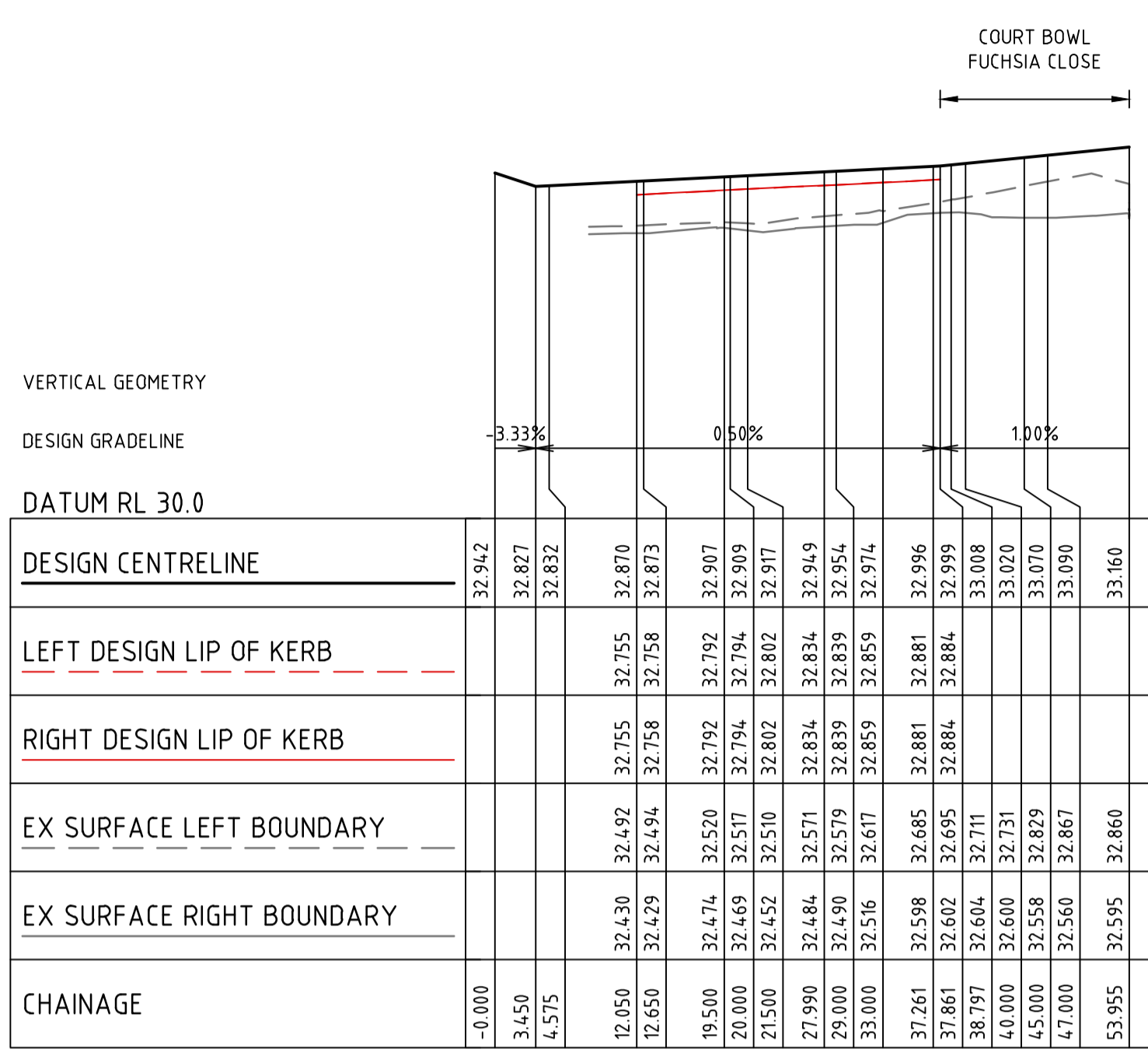
16 BRIDGE STREET BENDIGO
 VICTORIA 3550 AUSTRALIA T 61 3 5448 2500
 spiire.com.au ABN 55 050 029 635



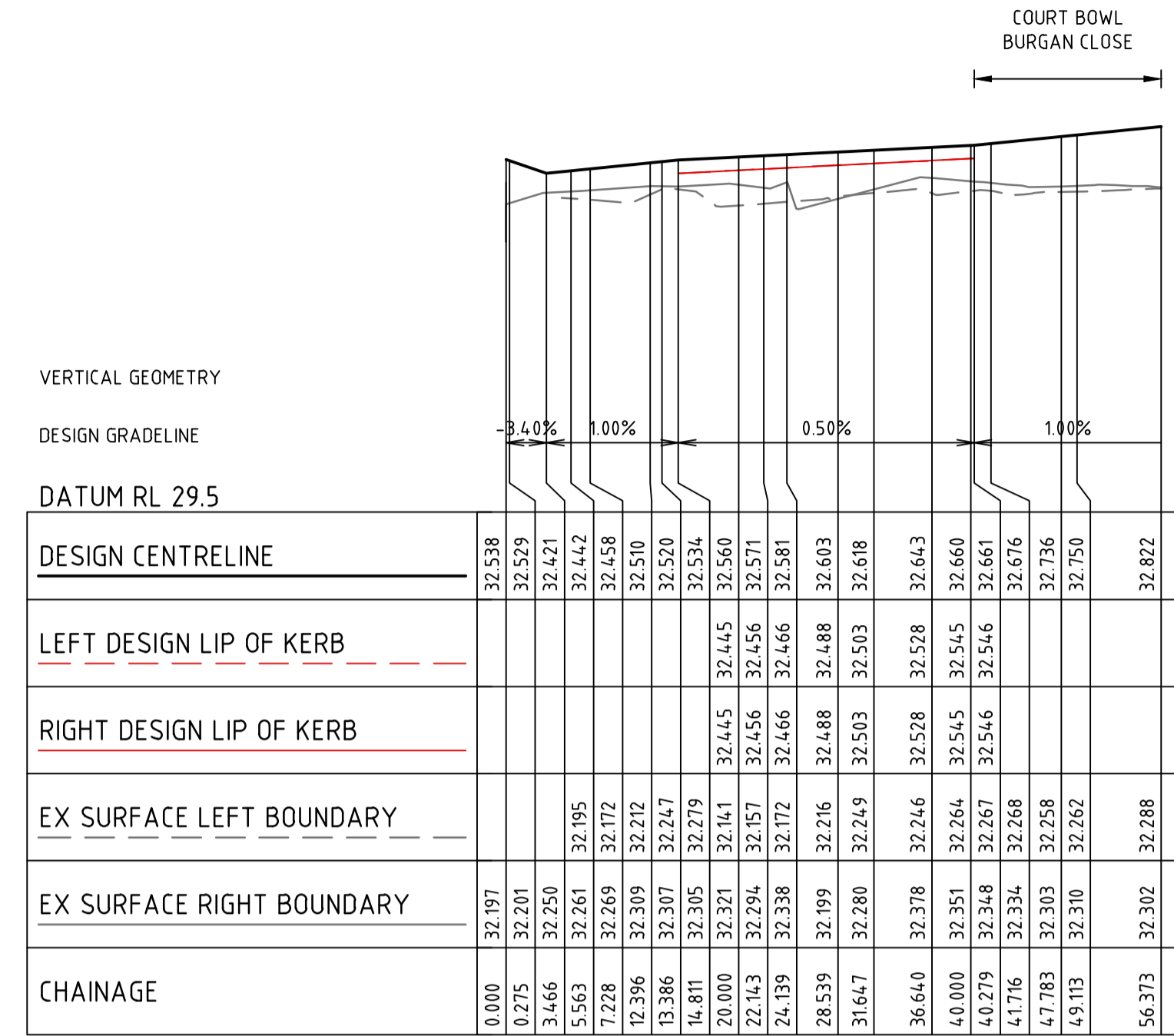
Designed
 S.SALHAN
 Authorised
 B.WAREHAM
 Checked
 B.IBBS - PE0007167
 Date
 14/11/22

**OFFICER CENTRAL
 STAGE 6
 ROAD AND DRAINAGE
 ROAD LAYOUT PLANS - EARTHWORKS PLAN**
 CARDINIA SHIRE
 YOURLAND

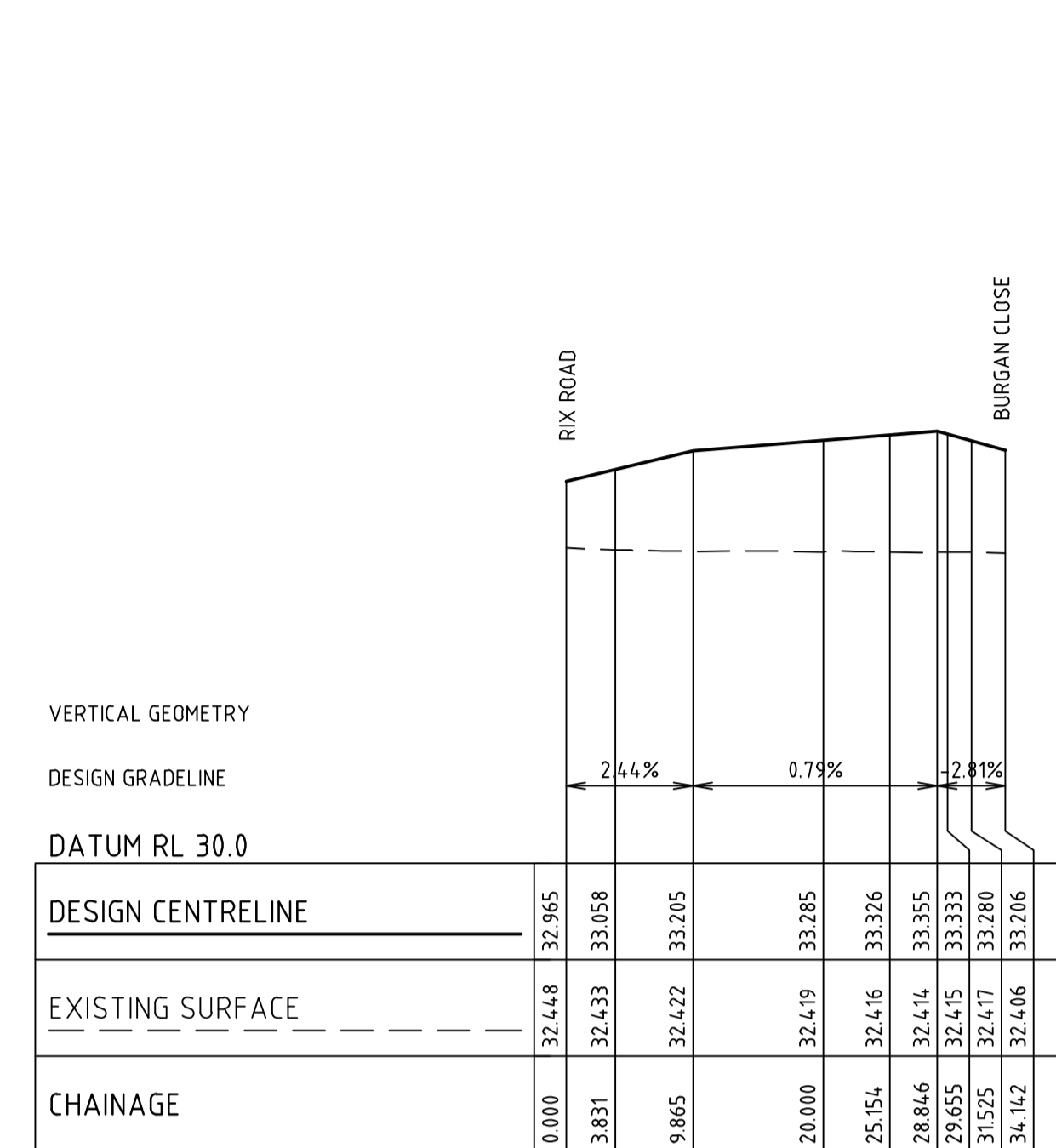
PRELIMINARY Drg No **309134CR202** Rev **A**



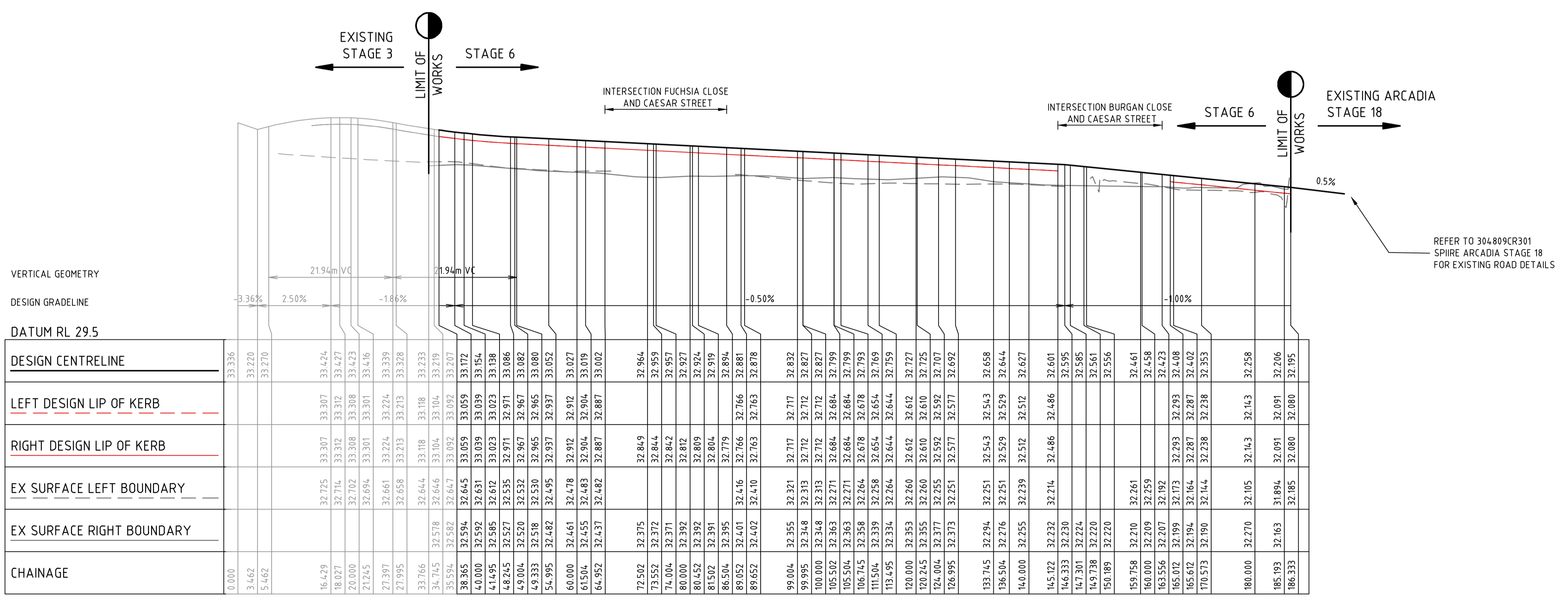
FUCHSIA CLOSE



BURGAN CLOSE



RESERVE FOOTPATH

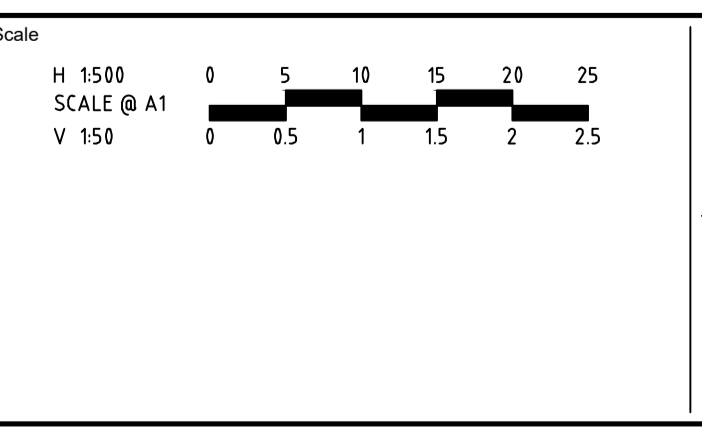


CAESAR STREET

APPROVED FOR CONSTRUCTION
 CARDINIA SHIRE COUNCIL
 Ref No.: S22-056 T1200411
 Sheet: 5 of 14
 Approved by: M.Patel - Dev Engineering
 CARDINIA SHIRE COUNCIL
 Date: Friday, 16 December 2022

file name: 309134CR300.dwg, layout name: CR300, plotted by: Saurabh Sathya, file location: \\spire.com.au\server\data\309134CR300.dwg, plot date: 14/11/2022, 15:53 PM, Sheet 5 of 14, Sheets

Rev	Description	Date
A	PRELIMINARY ISSUE	28/06/22
B.W	Approved	



ISO 9001 Registered
ISO 45001 Registered
ISO 14001 Registered
 System Certified

© Spiire Australia Pty Ltd All Rights Reserved
 This document is produced by Spiire Australia Pty Ltd solely for the benefit of and use by the client in accordance with the terms of the retainer. Spiire Australia Pty Ltd does not and shall not assume any responsibility or liability whatsoever to any third party arising out of any use or reliance by third party on the content of this document.

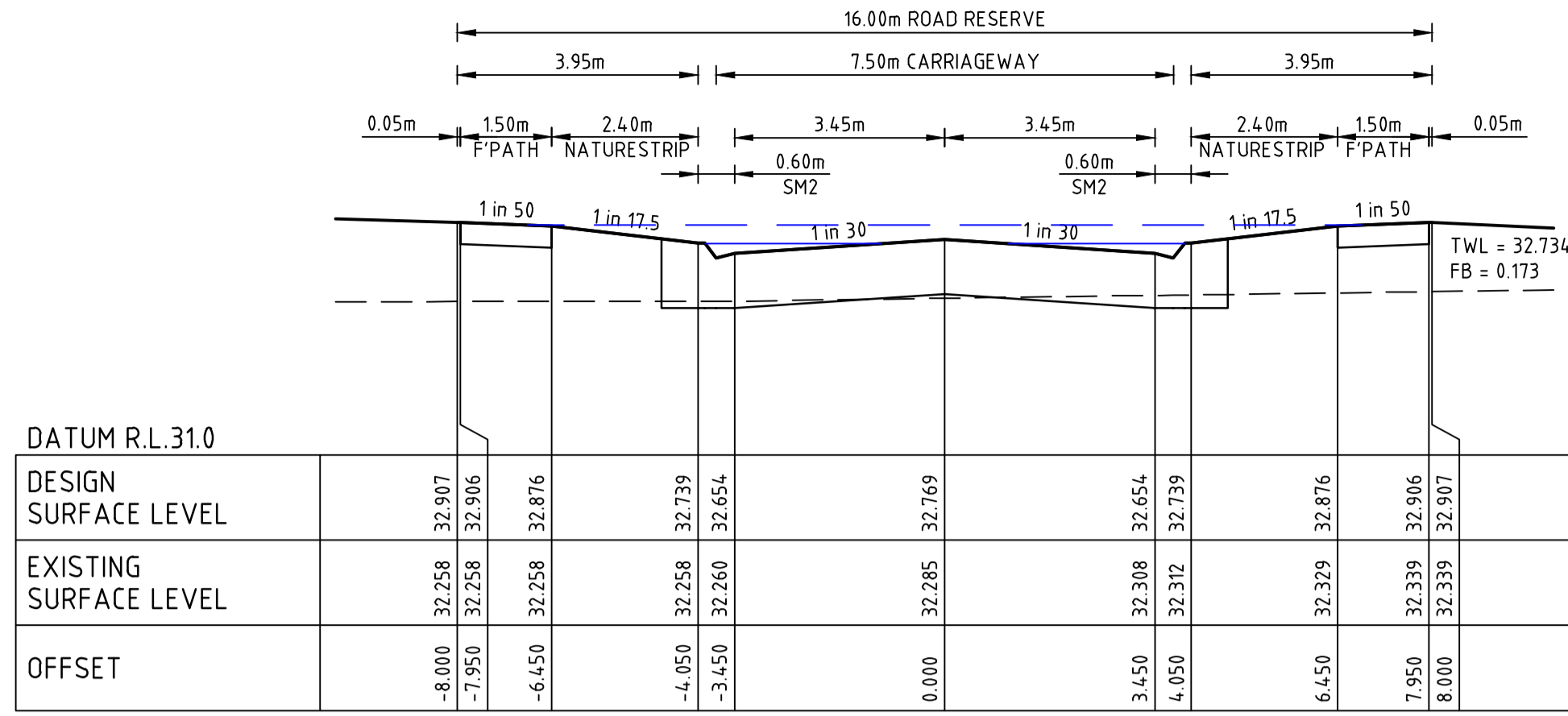
16 BRIDGE STREET BENDIGO
 VICTORIA 3550 AUSTRALIA T 61 3 5448 2500
 spiire.com.au ABN 55 050 029 635

Designed: S.SALHAN
 Authorised: B.WAREHAM
 Checked: B.IBBS - PE0007167
 Date: 14/11/22

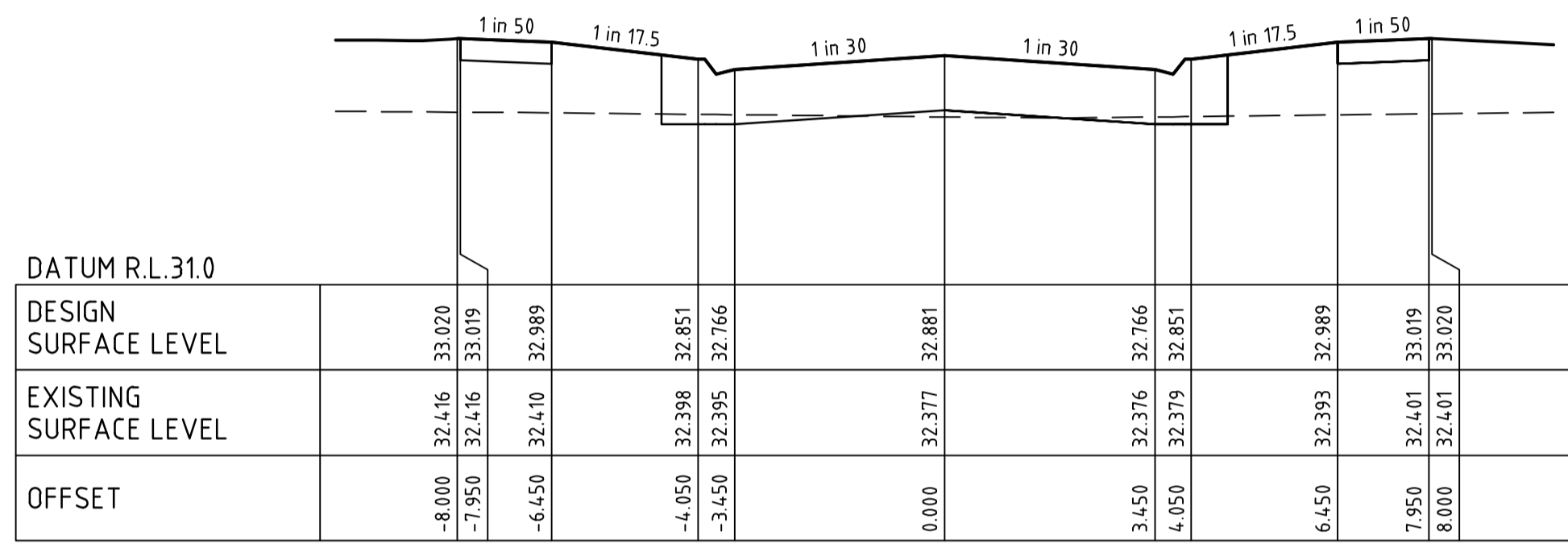
OFFICER CENTRAL
STAGE 6
 ROAD AND DRAINAGE
 ROAD LONG SECTIONS
 CARDINIA SHIRE
 YOURLAND

PRELIMINARY Drg No: 309134CR300 Rev: A

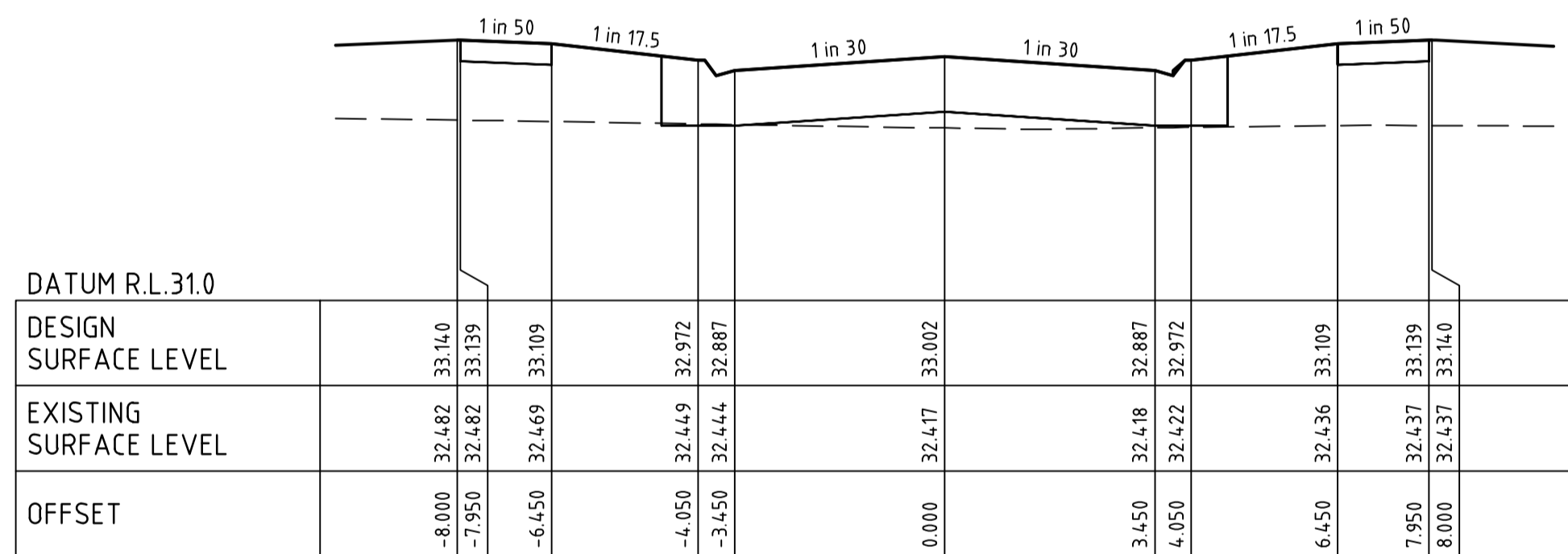
FILLING NOTE
 ALL FILLING WITHIN ROAD RESERVES IS TO BE UNDERTAKEN USING LEVEL 1 SUPERVISION AND BE COMPLETED IN ACCORDANCE WITH AS 3798-2007 AND TO THE SATISFACTION OF COUNCIL AND THE SUPERINTENDENT. FILL AREAS ARE TO BE STRIPPED OF TOPSOIL, FILLED AND REPLACED WITH TOPSOIL (WHERE REQUIRED) TO OBTAIN THE FINAL LEVELS SHOWN ON THE DRAWINGS.



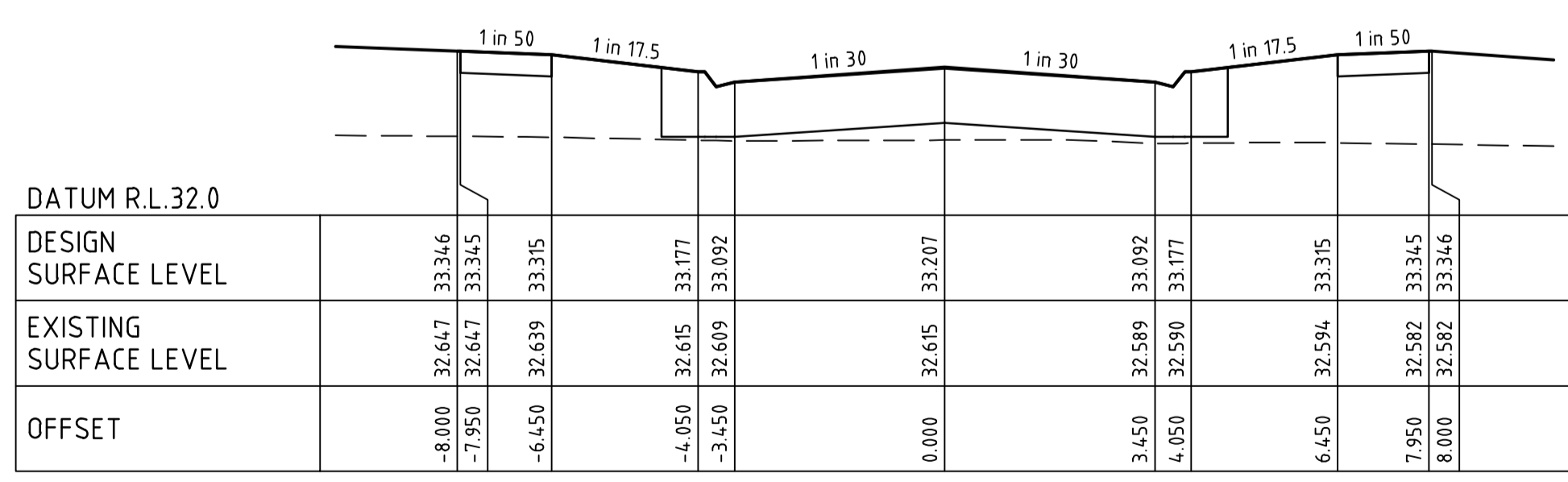
CAESAR STREET CH 111.50



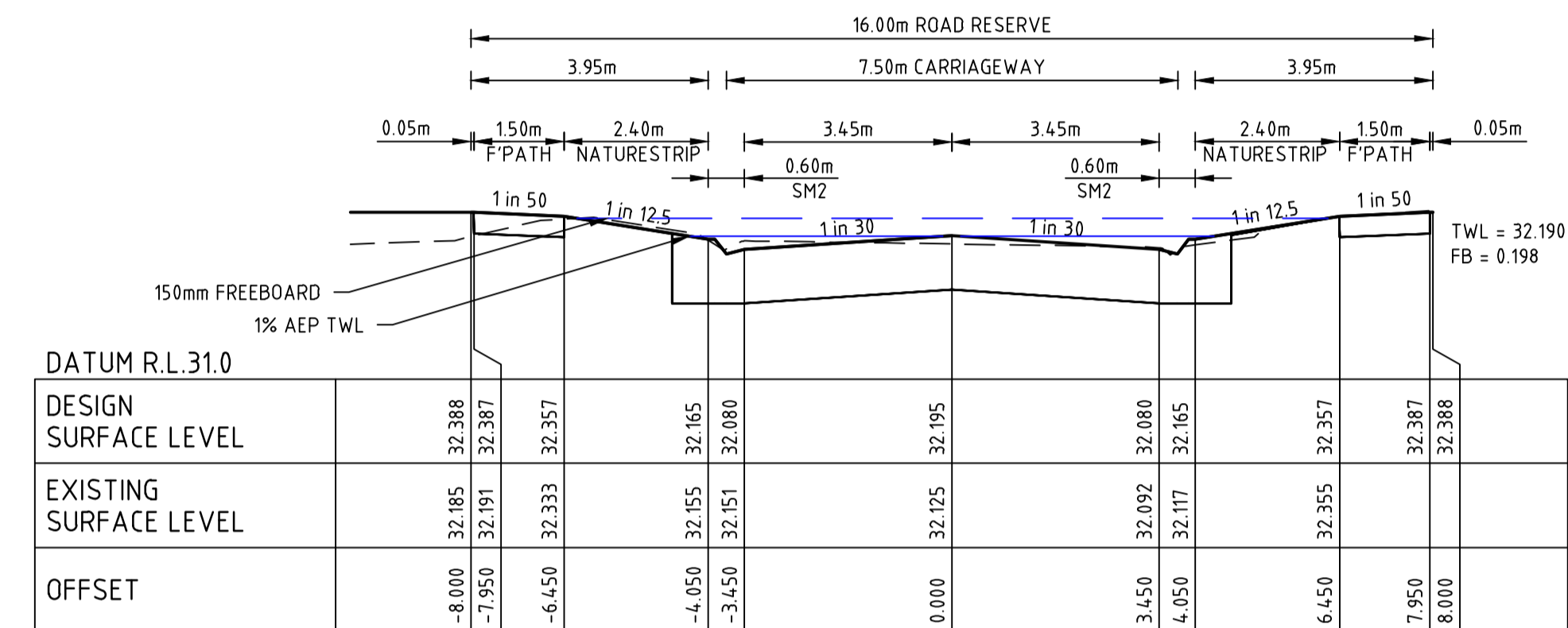
CAESAR STREET CH 89.05



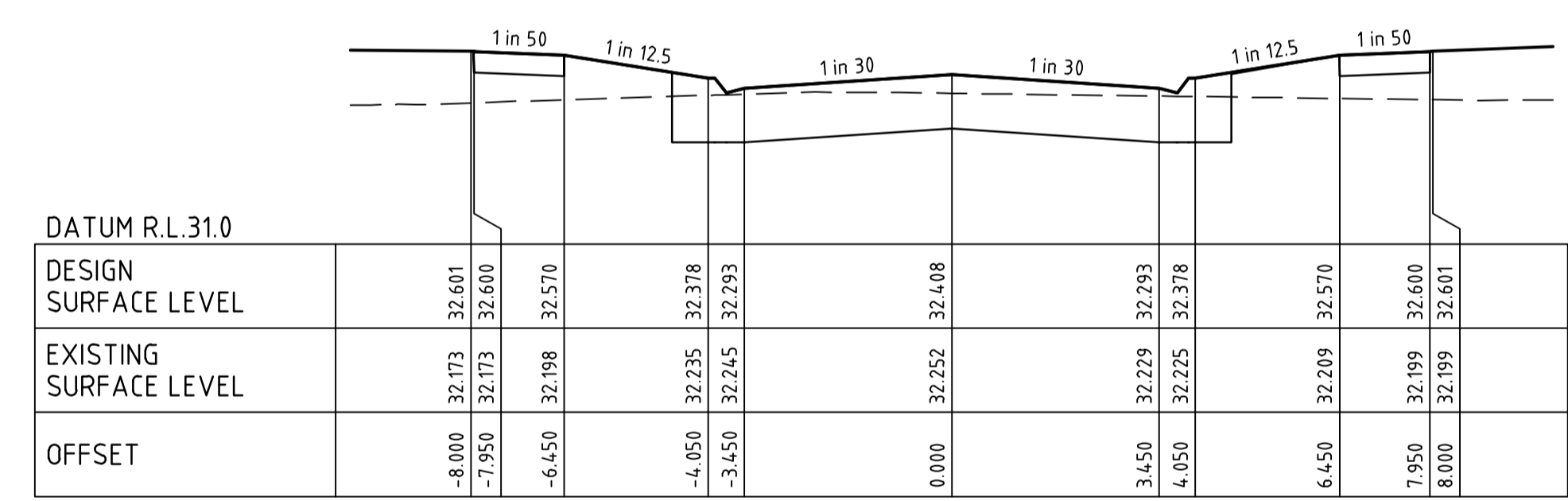
CAESAR STREET CH 64.95



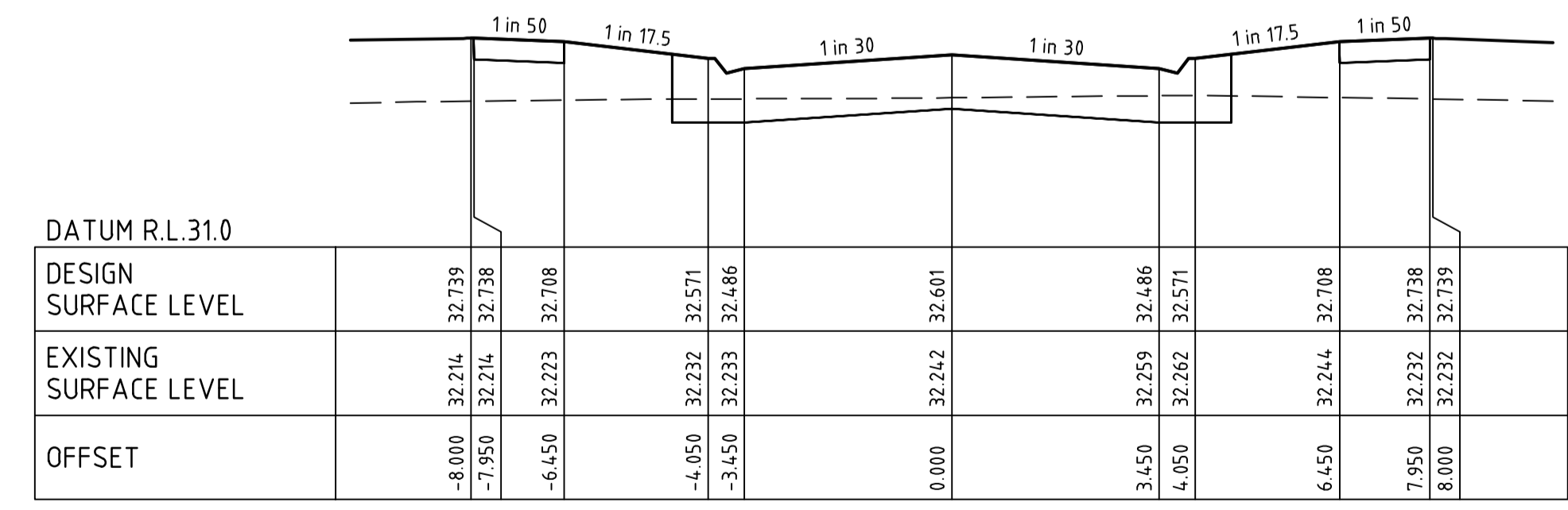
CAESAR STREET CH 35.59



CAESAR STREET CH 186.33



CAESAR STREET CH 165.01

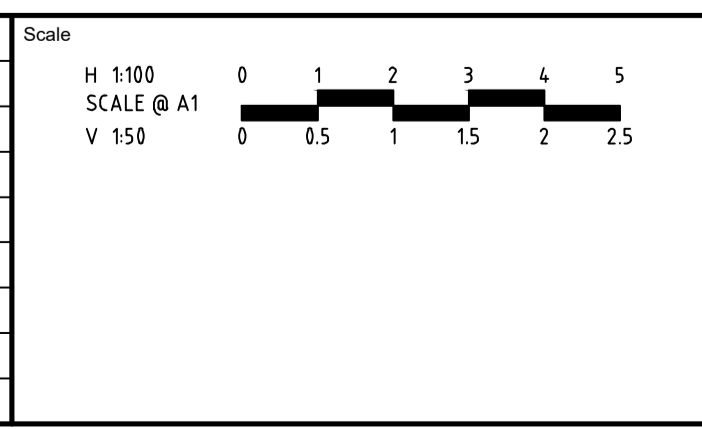


CAESAR STREET CH 145.12

APPROVED FOR CONSTRUCTION
 CARDINIA SHIRE COUNCIL
 Ref No.: S22-056 T1200411
 Sheet: 6 of 14
 Approved by: M.Patel - Dev Engineering
 CARDINIA SHIRE COUNCIL
 Date: Friday, 16 December 2022

file: \\spire.com.au\projects\309134\CR400\Drawings\CAESAR\CH 111.50.dwg, 14/11/2022 15:53 PM, Sheet 6 of 14, Sheets

Rev	Description	Approved	Date
A	PRELIMINARY ISSUE	B.W	28/06/22
	Amendments		



System Certified
 © Spiire Australia Pty Ltd All Rights Reserved
 This document is produced by Spiire Australia Pty Ltd solely for the benefit of and use by the client in accordance with the terms of the retainer. Spiire Australia Pty Ltd does not and shall not assume any responsibility or liability whatsoever to any third party arising out of any use or reliance by third party on the content of this document.

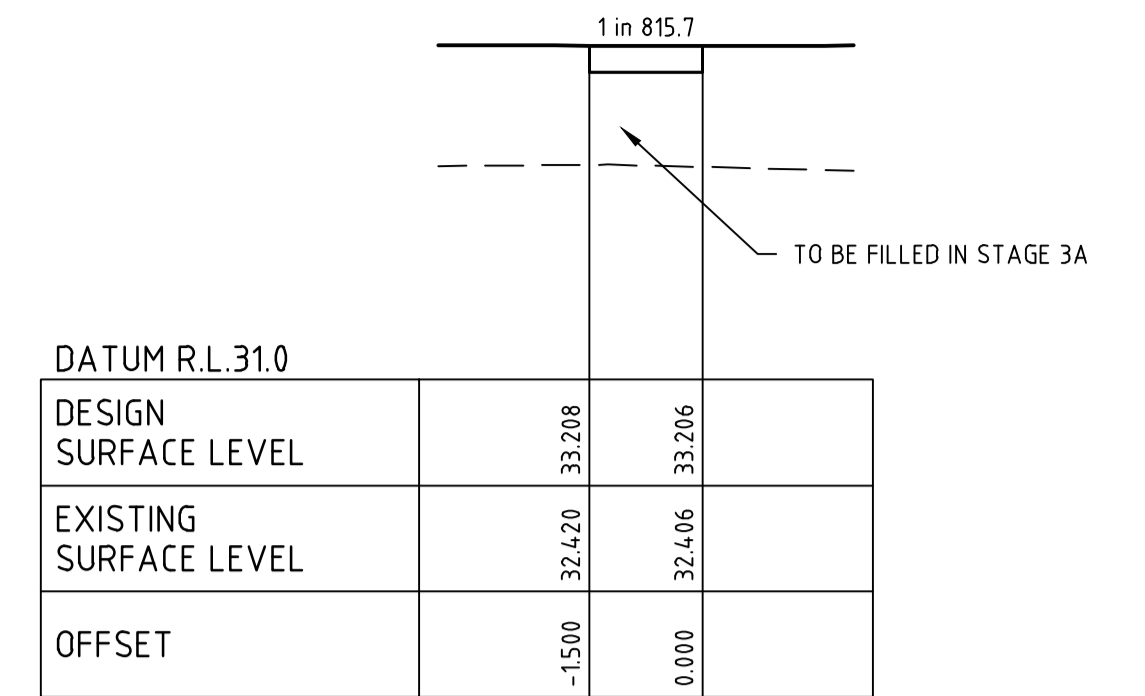
16 BRIDGE STREET BENDIGO
 VICTORIA 3550 AUSTRALIA T 61 3 5448 2500
 spiire.com.au ABN 55 050 029 635

Designed: S.SALHAN
 Authorised: B.WAREHAM
 Checked: B.IBBS - PE0007167
 Date: 14/11/22

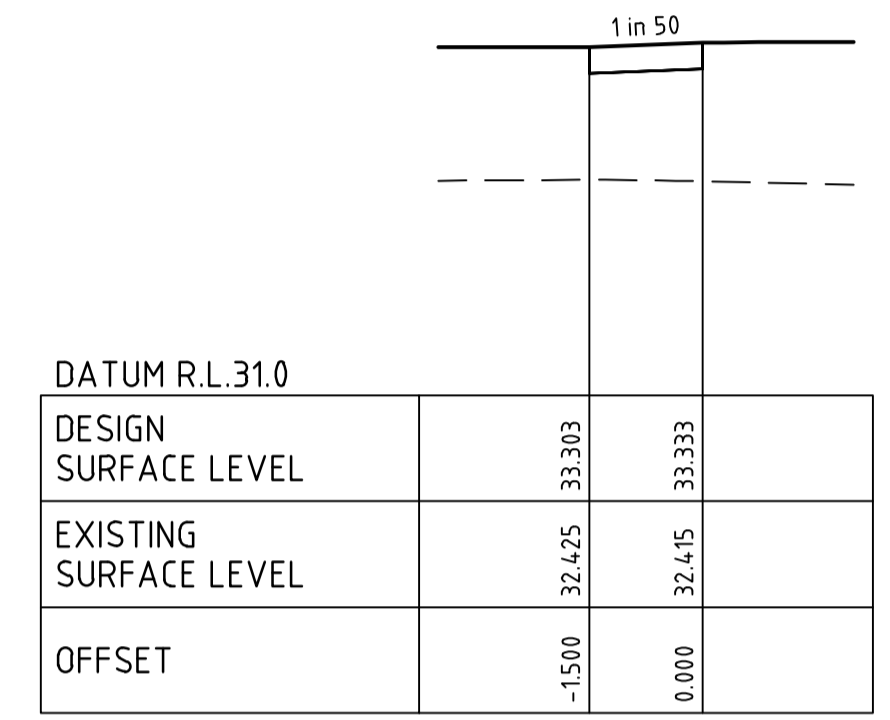
OFFICER CENTRAL
STAGE 6
ROAD AND DRAINAGE
ROAD CROSS SECTIONS - SHEET 1
 CARDINIA SHIRE
 YOURLAND
PRELIMINARY Drg No: 309134CR400 Rev: A

FILLING NOTE
 ALL FILLING WITHIN ROAD RESERVES IS TO BE UNDERTAKEN USING LEVEL 1 SUPERVISION AND BE COMPLETED IN ACCORDANCE WITH AS 3798-2007 AND TO THE SATISFACTION OF COUNCIL AND THE SUPERINTENDENT. FILL AREAS ARE TO BE STRIPPED OF TOPSOIL, FILLED AND REPLACED WITH TOPSOIL (WHERE REQUIRED) TO OBTAIN THE FINAL LEVELS SHOWN ON THE DRAWINGS.

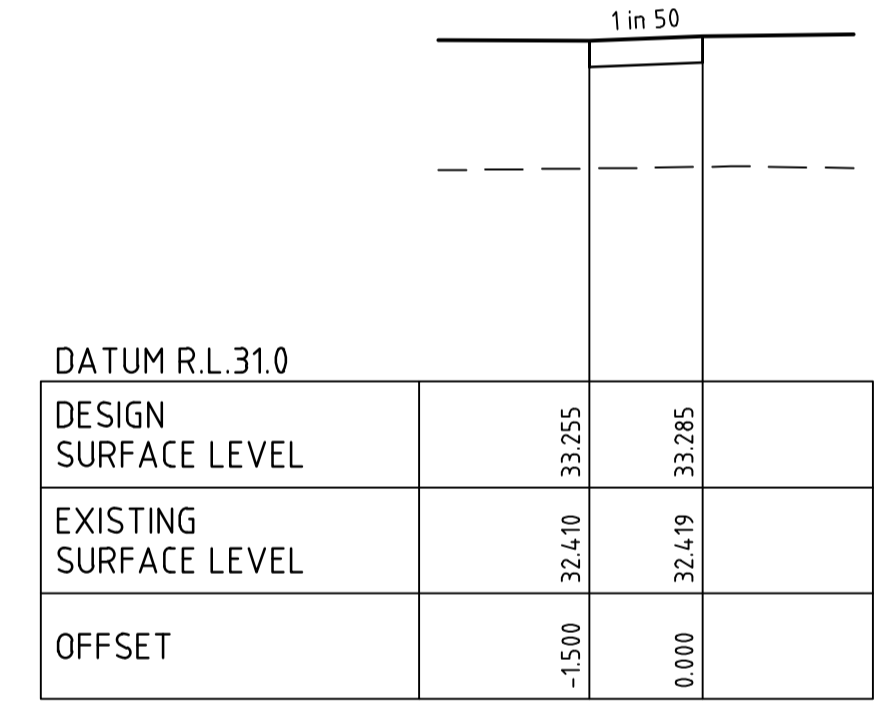
APPROVED FOR CONSTRUCTION
CARDINIA SHIRE COUNCIL
 Ref No.: S22-056 T1200411
 Sheet: 7 of 14
 Approved by: M.Patel - Dev Engineering
 CARDINIA SHIRE COUNCIL
 Date: Friday, 16 December 2022



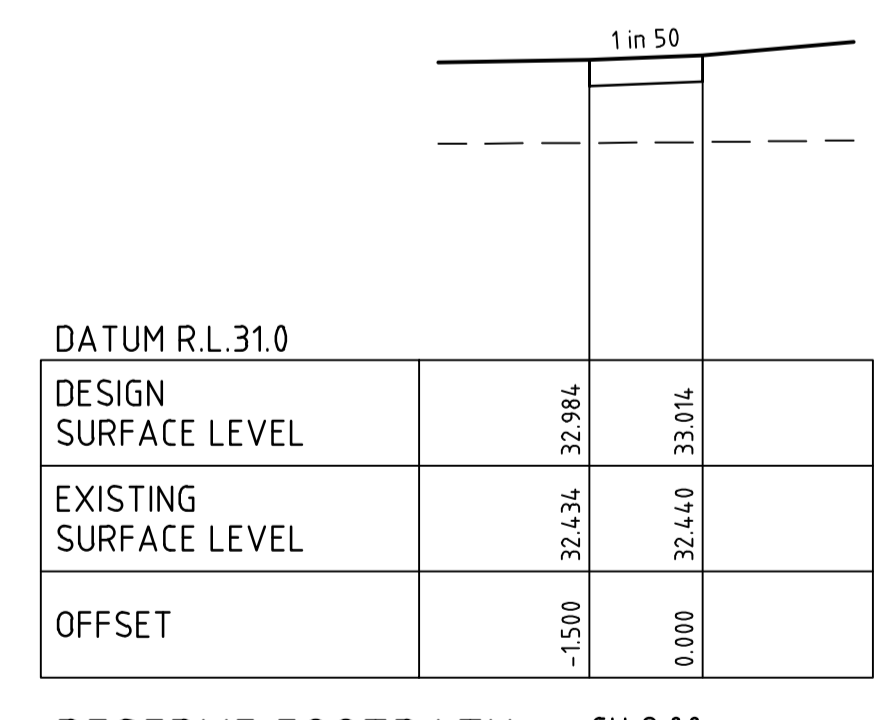
RESERVE FOOTPATH CH 34.14



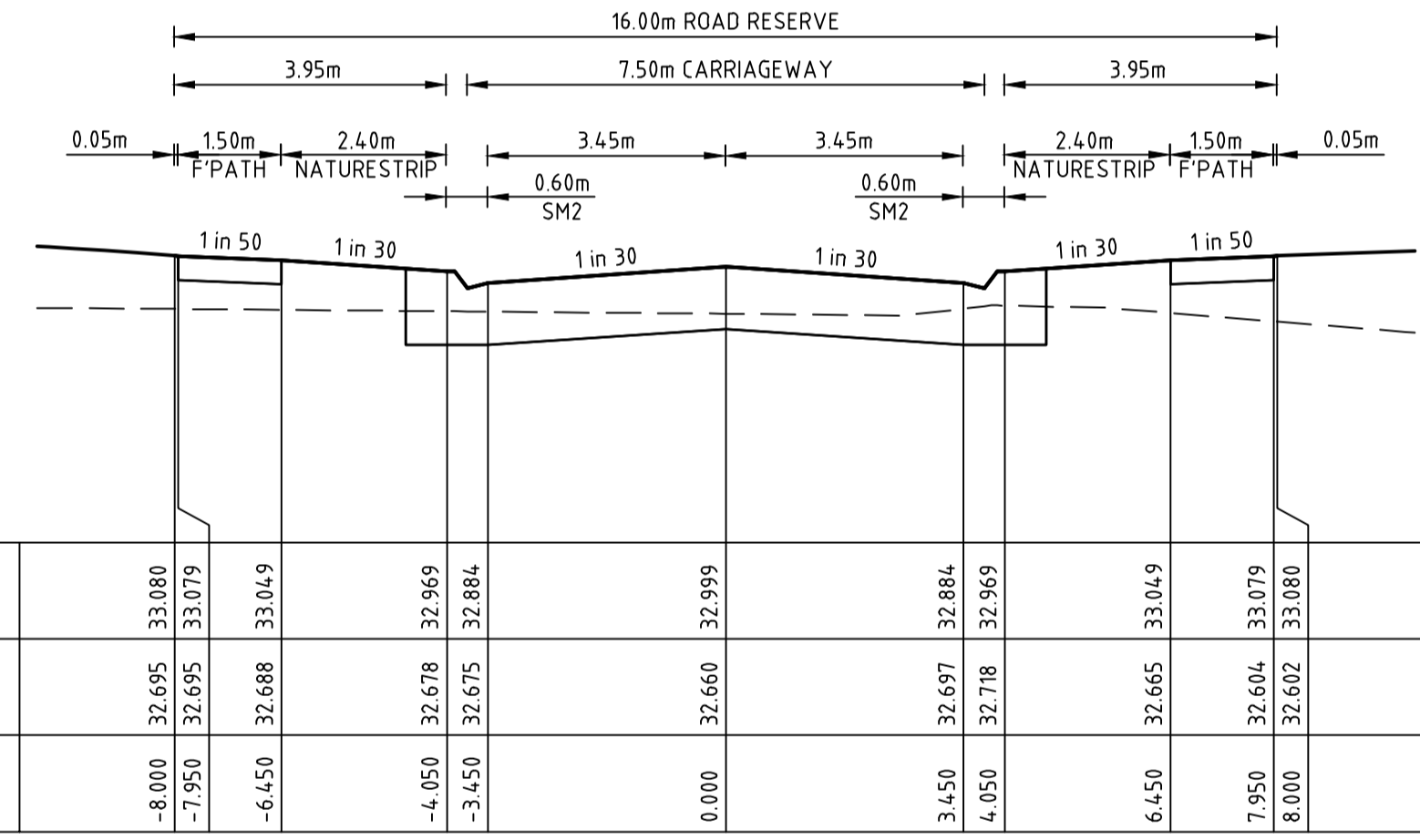
RESERVE FOOTPATH CH 29.66



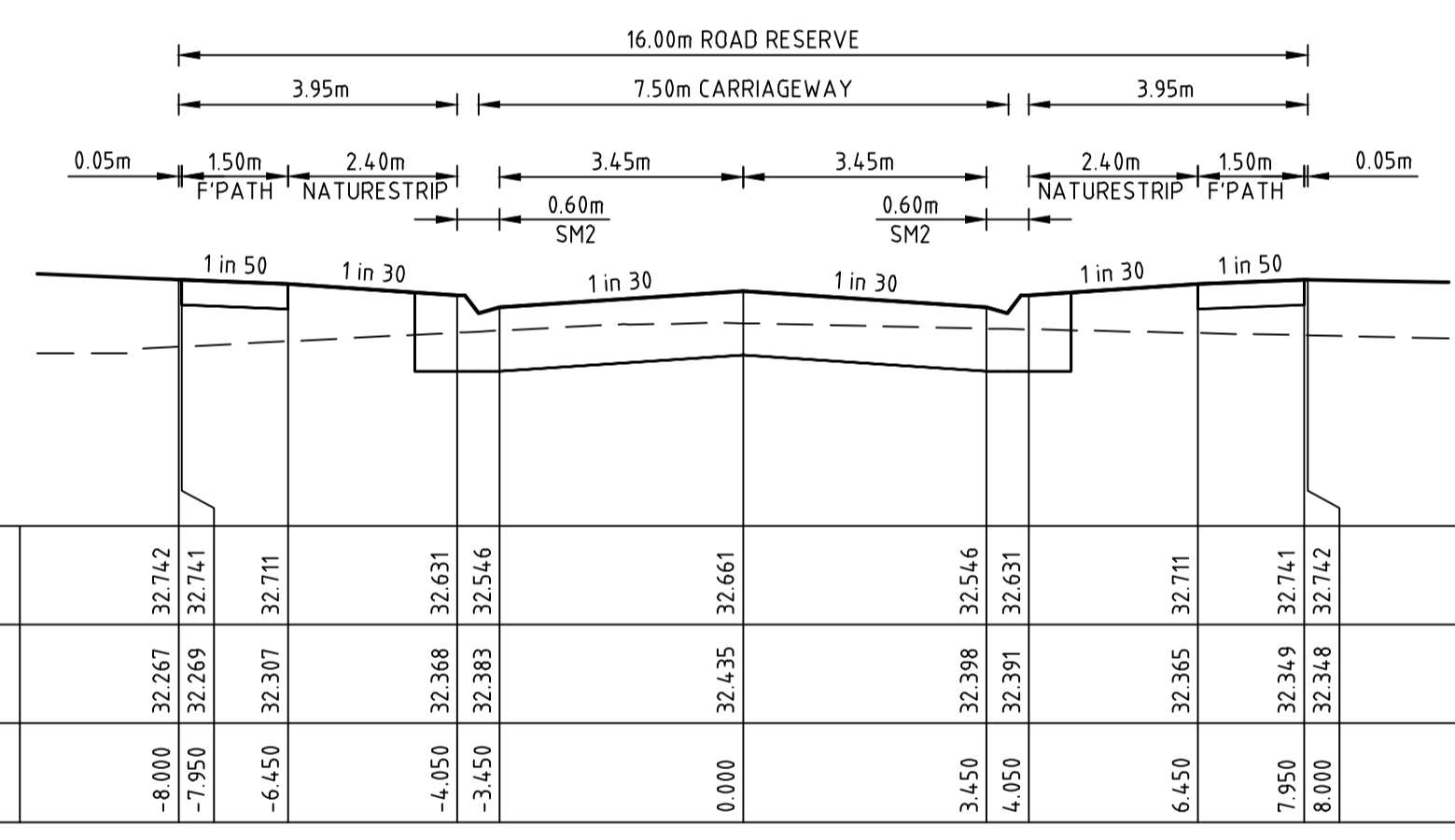
RESERVE FOOTPATH CH 20.00



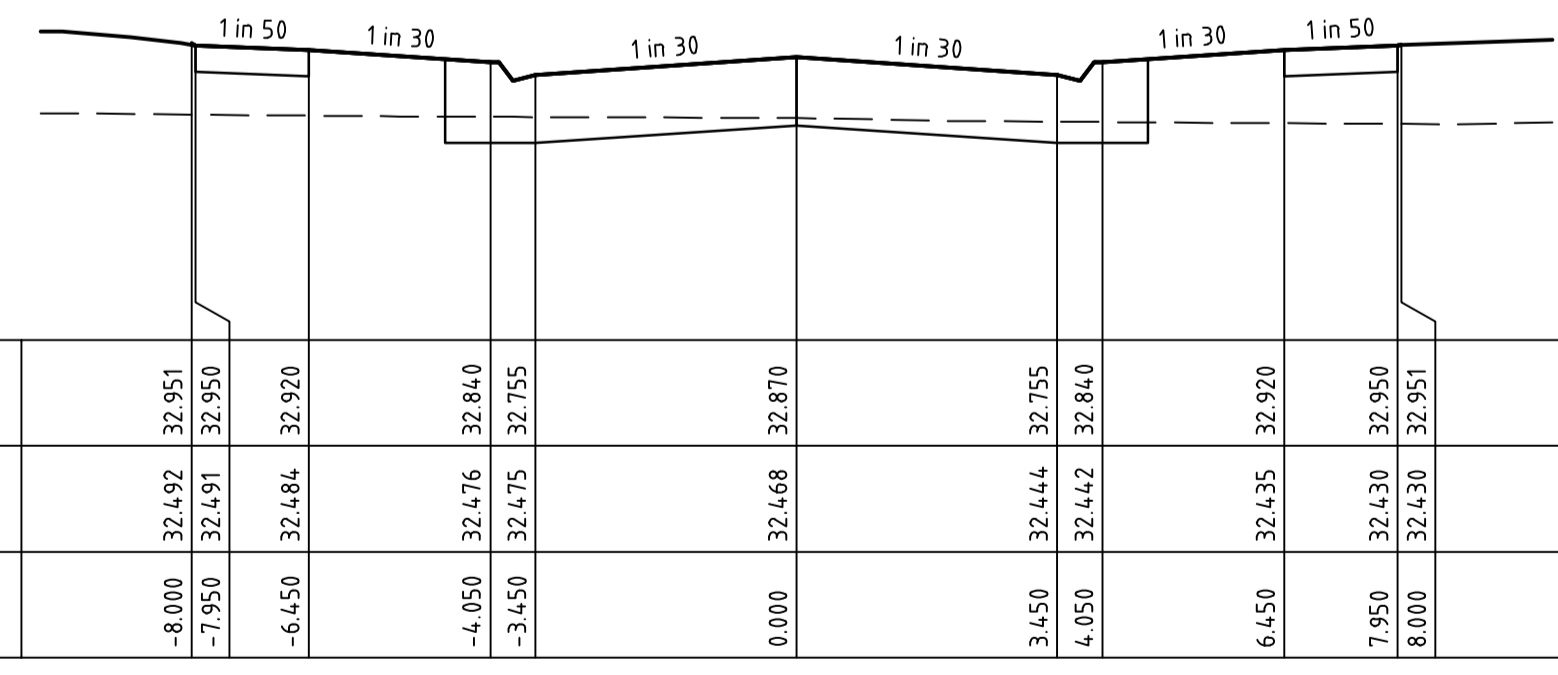
RESERVE FOOTPATH CH 2.00



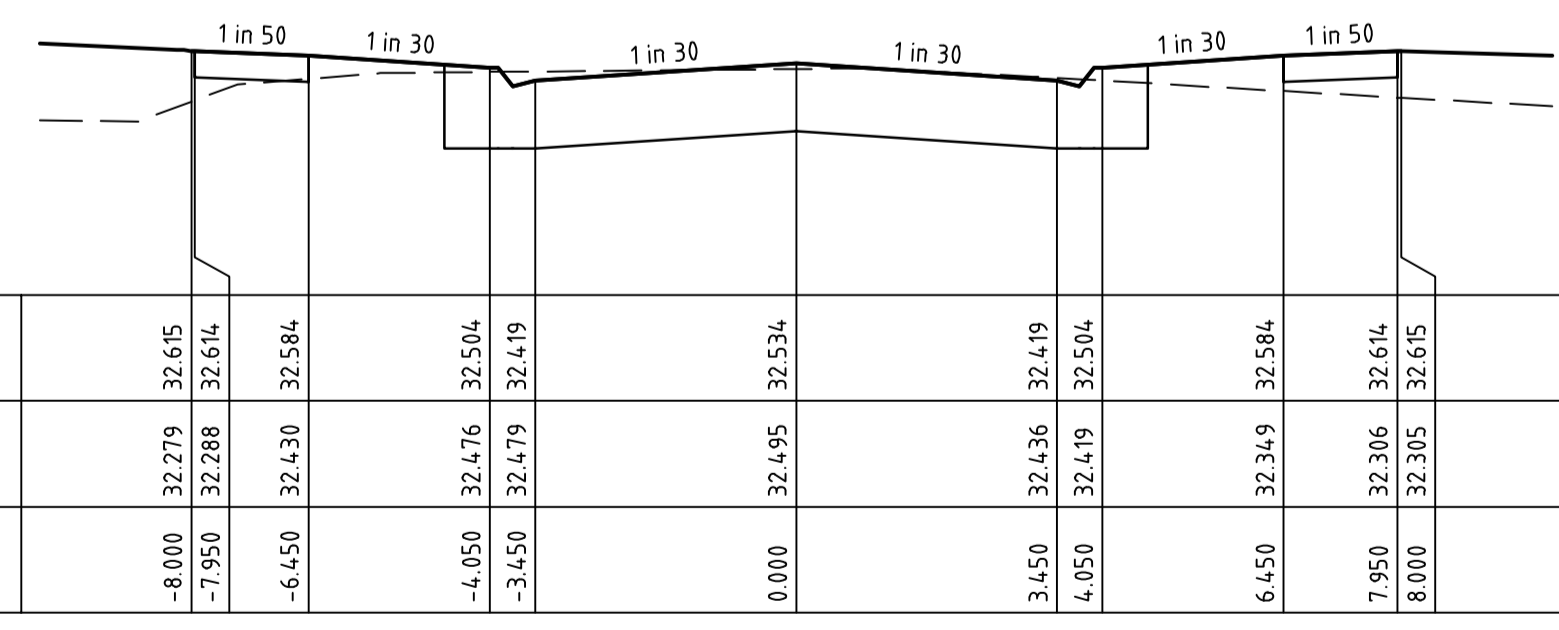
FUCHSIA CLOSE CH 37.86



BURGAN CLOSE CH 4.0.28



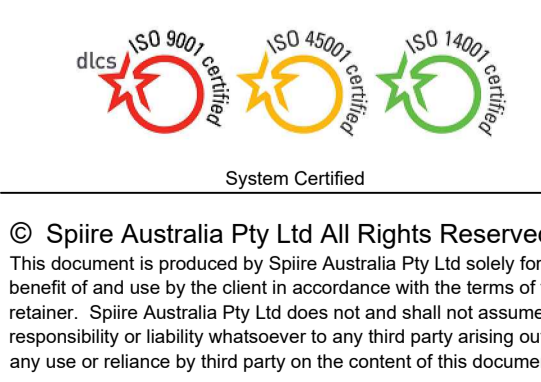
FUCHSIA CLOSE CH 12.05



BURGAN CLOSE CH 14.81

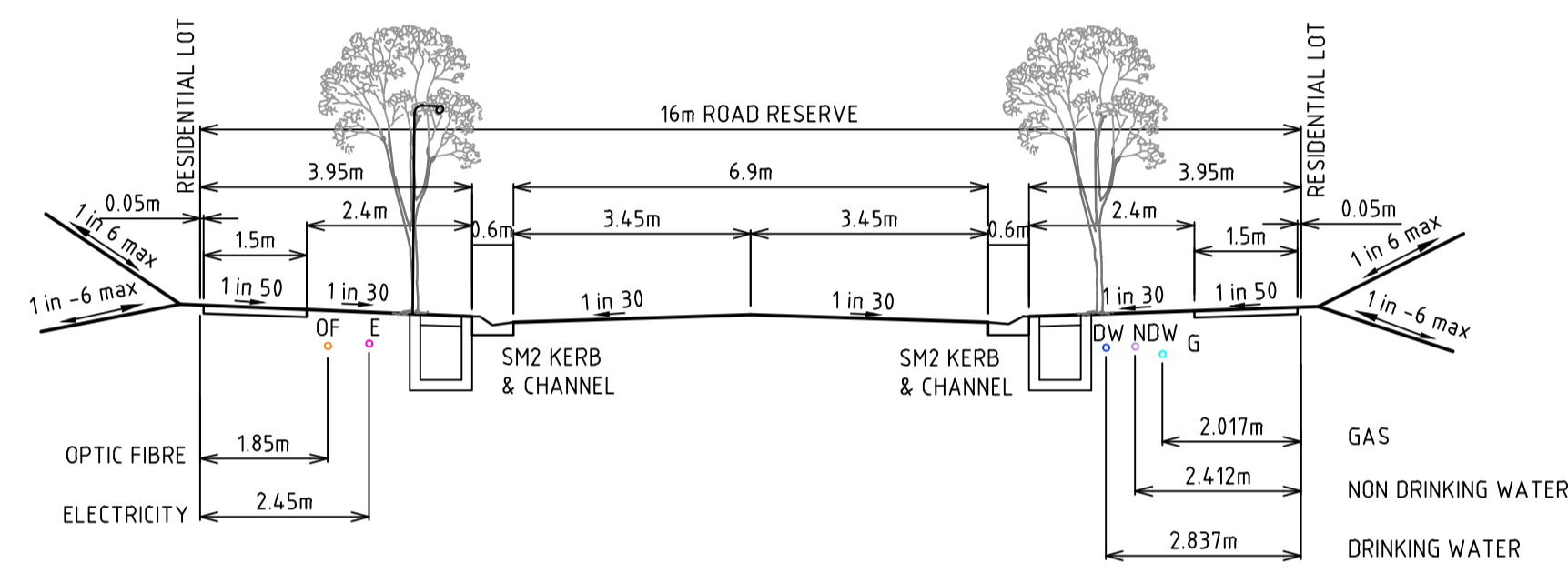
file name: 309134CR401.dwg, layout name: CR401, plotted by: Saurav, Estbdr, file location: \\spire\server\projects\309134\309134.dwg, plot date: 14/11/2022 1:53 PM, Sheet: 7 of 14, Sheets

Scale	H 1:100	0 1 2 3 4 5		
	SCALE @ A1	0 0.5 1 1.5 2 2.5		
	V 1:50			
Rev	A	PRELIMINARY ISSUE	B.W	28/06/22
		Amendments	Approved	Date

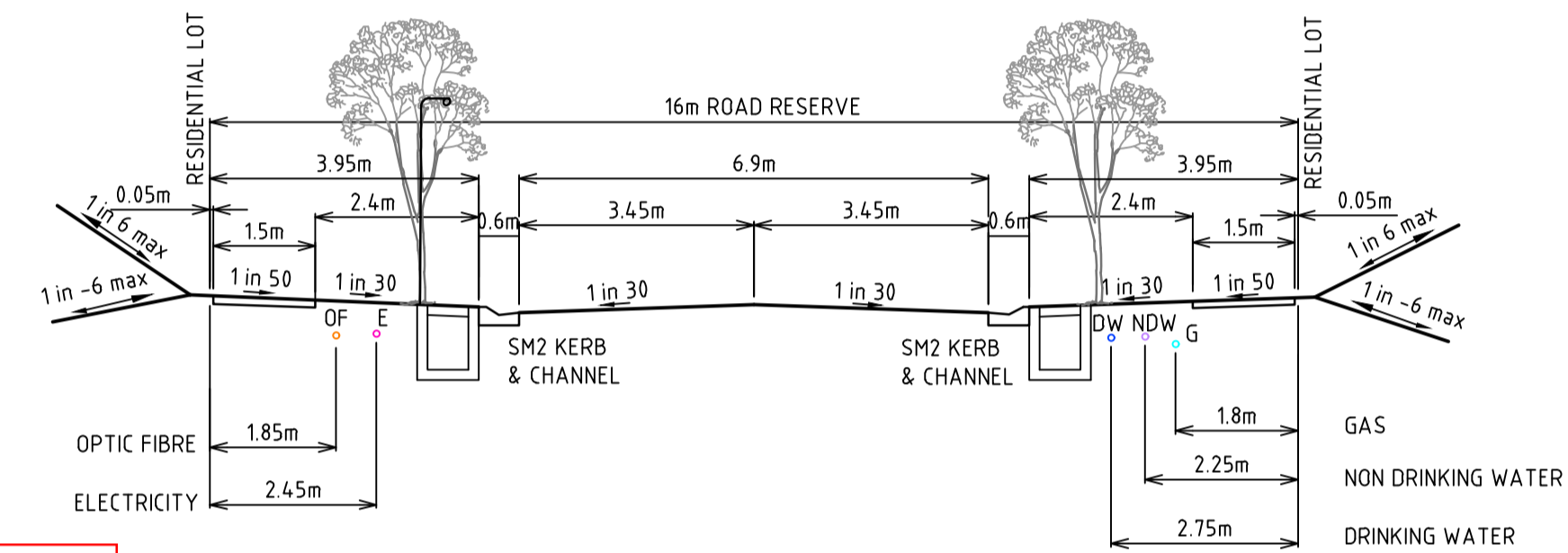


OFFICER CENTRAL
STAGE 6
ROAD AND DRAINAGE
ROAD CROSS SECTIONS - SHEET 2
 CARDINIA SHIRE
 YOURLAND

PRELIMINARY Drg No: 309134CR401 Rev: A

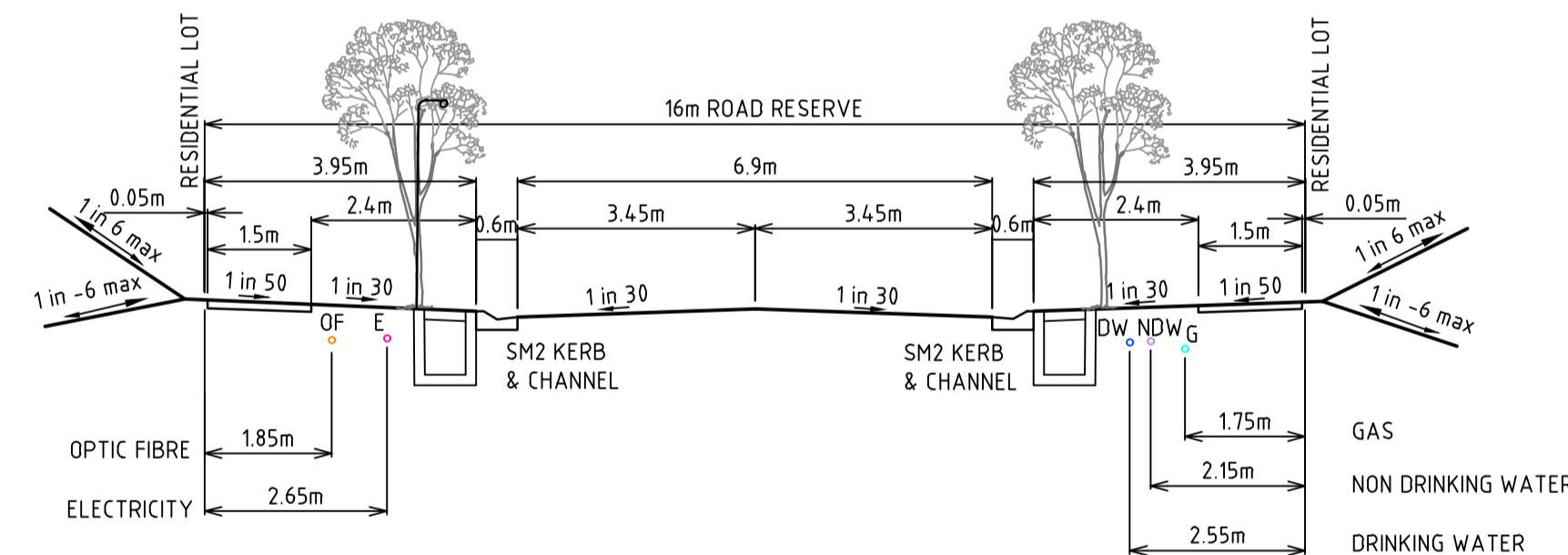


1. CAESAR STREET (601-609)
16m WIDE RESIDENTIAL ROAD



2. FUCHSIA CLOSE
16m WIDE RESIDENTIAL ROAD

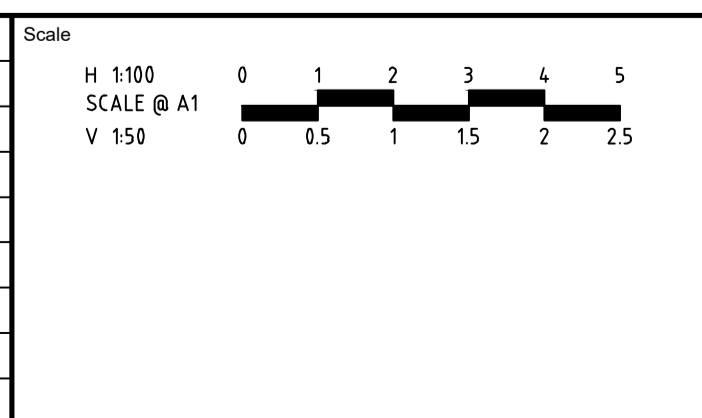
APPROVED FOR CONSTRUCTION
CARDINIA SHIRE COUNCIL
Ref No.: S22-056 T1200411
Sheet: 8 of 14
Approved by: M.Patel - Dev Engineering
CARDINIA SHIRE COUNCIL
Date: Friday, 16 December 2022



3. CAESAR STREET(609-611) & BORGAN CLOSE
16m WIDE RESIDENTIAL ROAD

file name: 309134CR402.dwg, location: c:\spire\com\spire\cardinia\309134CR402.dwg, plot date: 14/11/2022, 15:53 PM, Sheet: 8 of 14, Sheets

Rev	Amendments	Approved	Date
A	PRELIMINARY ISSUE	B.W	28/06/22



System Certified

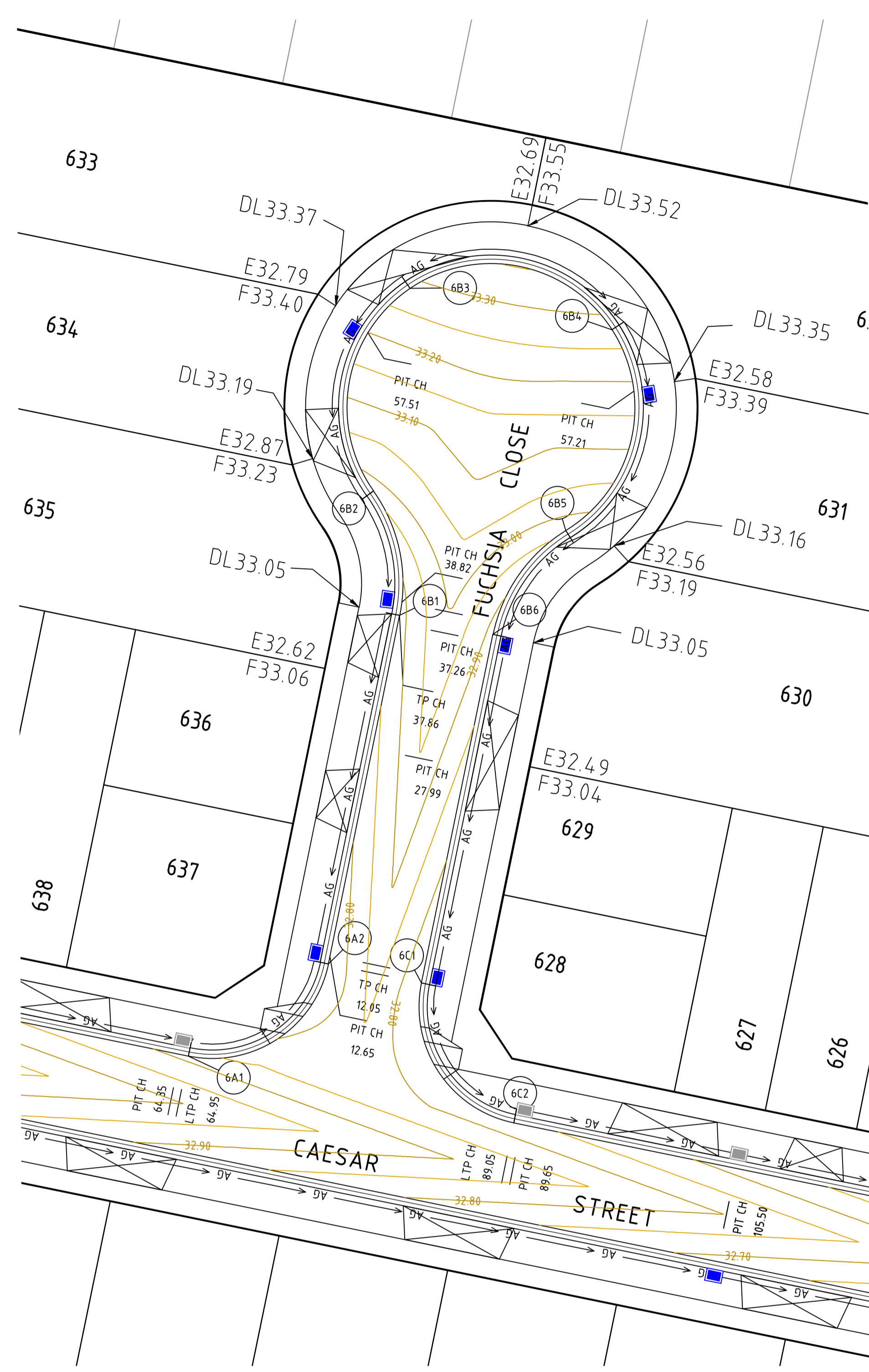
© Spiire Australia Pty Ltd All Rights Reserved
This document is produced by Spiire Australia Pty Ltd solely for the benefit of and use by the client in accordance with the terms of the retainer. Spiire Australia Pty Ltd does not and shall not assume any responsibility or liability whatsoever to any third party arising out of any use or reliance by third party on the content of this document.

16 BRIDGE STREET BENDIGO
VICTORIA 3550 AUSTRALIA T 61 3 5448 2500
spiire.com.au ABN 55 050 029 635

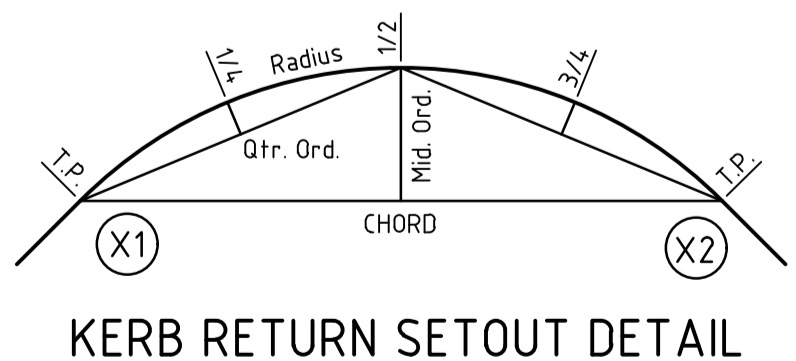
Designed S.SALHAN	Checked B.IBBS - PE0007167
Authorised B.WAREHAM	Date 14/11/22

**OFFICER CENTRAL
STAGE 6
ROAD AND DRAINAGE
ROAD CROSS SECTIONS - TYPICAL SECTIONS
CARDINIA SHIRE
YOURLAND**

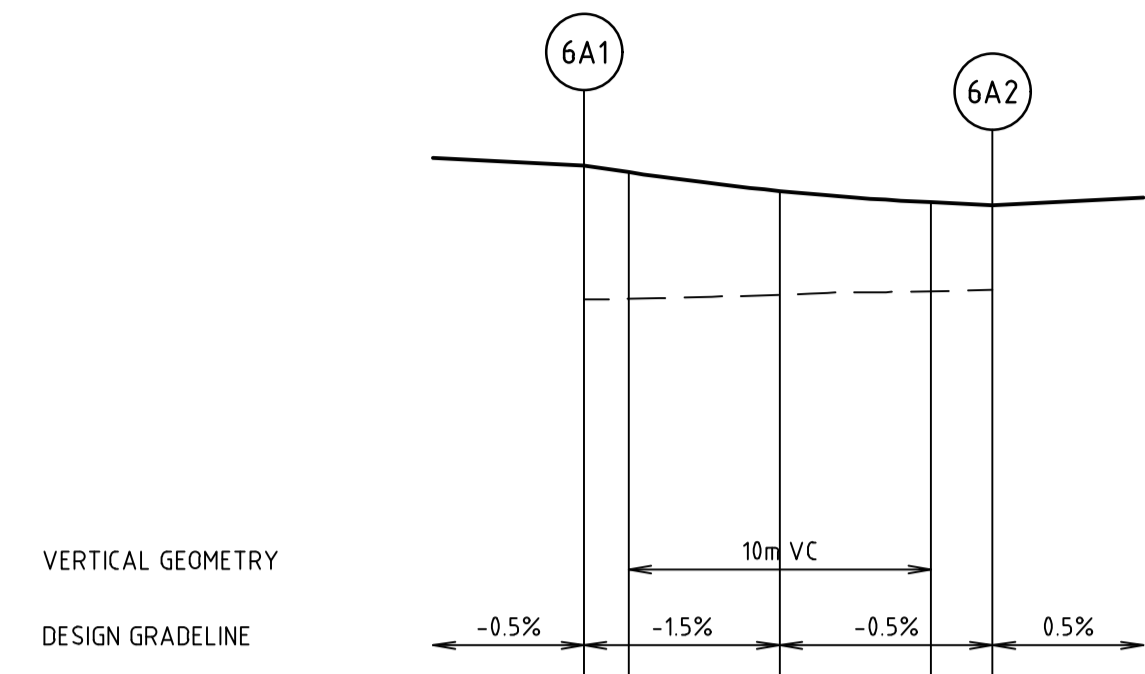
PRELIMINARY Drg No: 309134CR402 Rev: A



INTERSECTION DETAIL PLAN
INTERSECTION OF CAESAR STREET AND FUCHSIA CLOSE, COURT BOWL FUCHSIA CLOSE



KERB RETURN SETOUT DETAIL



VERTICAL GEOMETRY
DESIGN GRADELINE
DATUM RL 31.0

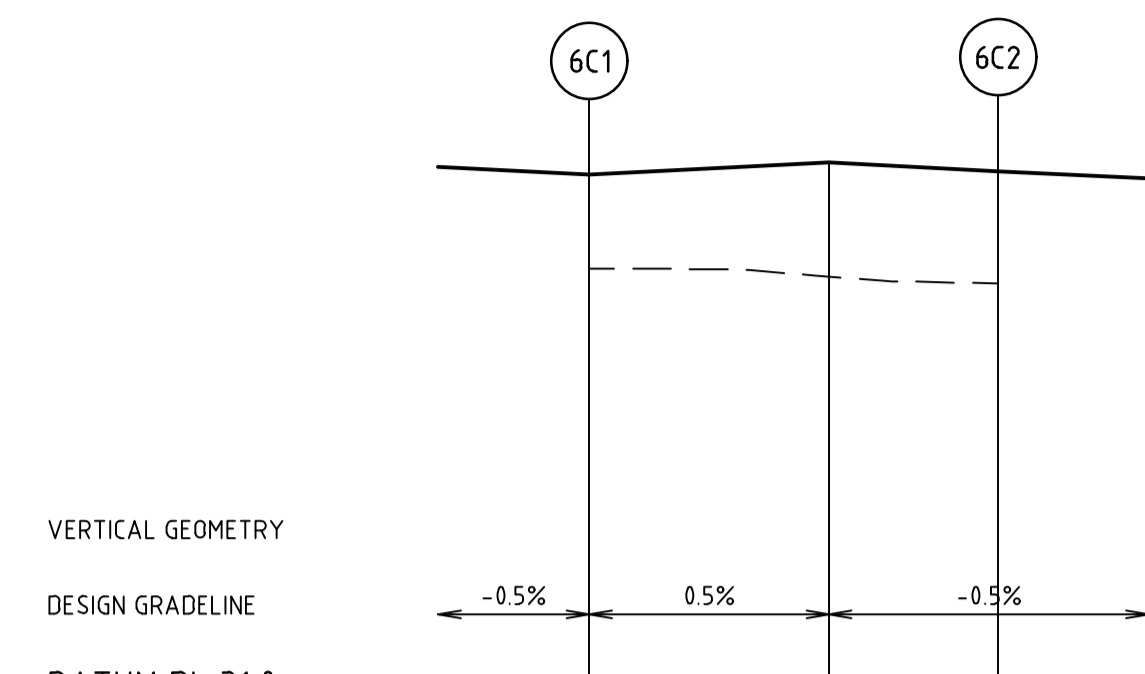
DESIGN LEVEL	0.000	32.887	32.865	32.802	32.765	32.755	
CHAINAGE		0.000	14.71	64.71	114.71	135.09	32.755

ALIGNMENT 6A

ALIGNMENT 6A

POINT NO	EASTING	NORTHING	RL	CHAINAGE
6A1	359734.779	5785311.209	32.887	0.000
1/4	359738.135	5785311.190	32.838	3.377
1/2	359741.242	5785312.457	32.800	6.754
3/4	359743.628	5785314.817	32.772	10.132
6A2	359744.929	5785317.910	32.755	13.509

CURVE	RADIUS	ARC L	CHORD	MID ORD	QTR ORD
6A1-6A2	8.600	13.509	12.162	2.519	0.655



VERTICAL GEOMETRY
DESIGN GRADELINE
DATUM RL 31.0

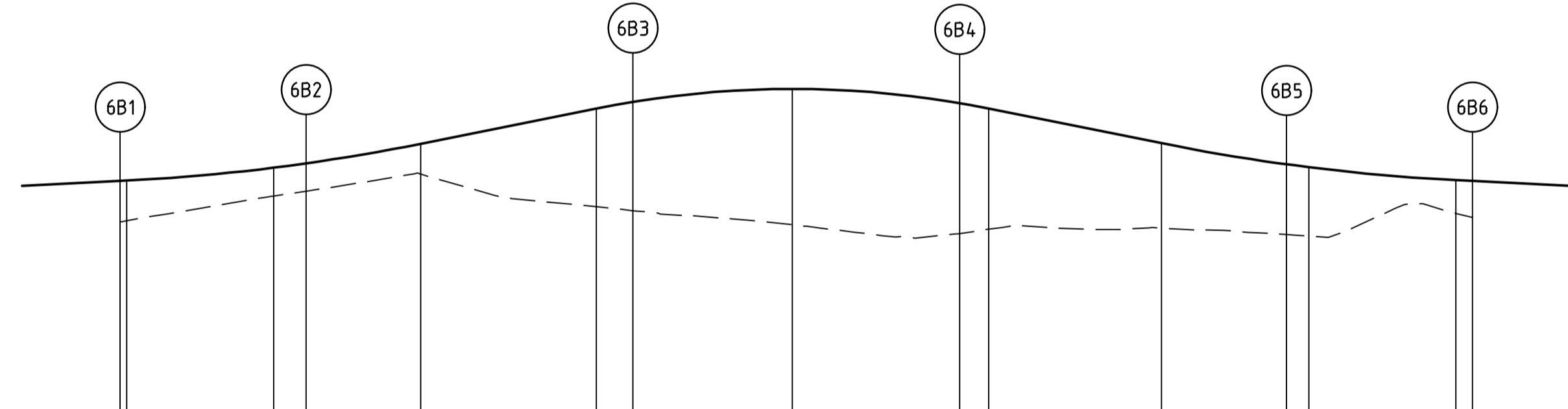
DESIGN LEVEL	0.000	32.755	32.794	32.766
CHAINAGE		0.000	7.929	13.509

ALIGNMENT 6C

ALIGNMENT 6C

POINT NO	EASTING	NORTHING	RL	CHAINAGE
6C1	359751.689	5785316.526	32.755	0.000
1/4	359751.670	5785313.170	32.772	3.377
1/2	359752.937	5785310.063	32.788	6.754
3/4	359755.297	5785307.677	32.783	10.132
6C2	359758.389	5785306.376	32.766	13.509

CURVE	RADIUS	ARC L	CHORD	MID ORD	QTR ORD
6C1-6C2	8.600	13.509	12.162	2.519	0.655



VERTICAL GEOMETRY
DESIGN GRADELINE
DATUM RL 31.0

DESIGN LEVEL	0.000	32.884	32.885	32.951	32.973	33.073	33.252	33.285	33.352	33.279	33.252	33.075	32.968	32.954	32.888	32.884	
CHAINAGE		0.000	0.336	7.836	9.477	15.336	24.279	26.137	34.279	42.797	44.279	53.098	59.457	60.598	68.098	68.934	32.884

ALIGNMENT 6B

ALIGNMENT 6B

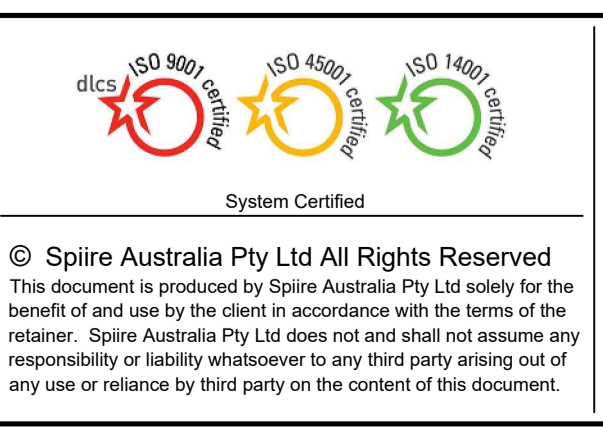
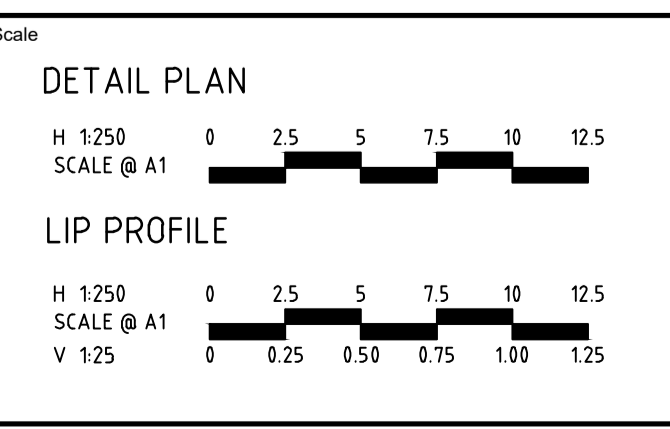
POINT NO	EASTING	NORTHING	RL	CHAINAGE
6B1	359750.106	5785343.196	32.884	0.000
1/4	359750.340	5785345.550	32.898	2.369
1/2	359750.091	5785347.902	32.917	4.739
3/4	359749.367	5785350.154	32.942	7.108
6B2	359748.200	5785352.211	32.973	9.477
1/4	359746.515	5785355.990	33.040	13.642
1/2	359746.429	5785360.126	33.122	17.807
3/4	359747.955	5785363.972	33.206	21.972
6B3	359750.854	5785366.924	33.285	26.137
1/4	359754.672	5785368.519	33.336	30.302
1/2	359758.809	5785368.509	33.352	34.467
3/4	359762.618	5785366.893	33.333	38.632
6B4	359765.501	5785363.925	33.279	42.797
1/4	359767.007	5785360.072	33.198	46.962
1/2	359766.899	5785355.936	33.115	51.127
3/4	359765.194	5785352.166	33.034	55.292
6B5	359762.160	5785349.353	32.968	59.457
1/4	359760.279	5785347.920	32.939	61.826
1/2	359758.728	5785346.133	32.915	64.195
3/4	359757.575	5785344.069	32.897	66.565
6B6	359756.866	5785341.812	32.884	68.934

CURVE	RADIUS	ARC L	CHORD	MID ORD	QTR ORD
6B1-6B2	11.550	9.477	9.214	0.959	0.242
6B2-6B3	10.450	16.660	14.951	3.148	0.819
6B3-6B4	10.450	16.660	14.951	3.148	0.819
6B4-6B5	10.450	16.660	14.951	3.148	0.819
6B5-6B6	11.550	9.477	9.214	0.959	0.242

APPROVED FOR CONSTRUCTION
CARDINIA SHIRE COUNCIL
Ref No.: S22-056 T1200411
Sheet: 9 of 14
Approved by: M.Patel - Dev Engineering
CARDINIA SHIRE COUNCIL
Date: Friday, 16 December 2022

file name: 309134CR500.dwg, layout name: CR500, plotted by: Saurav, path: \\spire.com.au\spire\cardinia\projects\309134CR500\DWG\CAD\plot date: 14/11/2022 15:53 PM, Sheet 9 of 14, Sheets

Rev	Description	Approved	Date
A	PRELIMINARY ISSUE	B.W	28/06/22
	Amendments		



© Spiire Australia Pty Ltd All Rights Reserved
This document is produced by Spiire Australia Pty Ltd solely for the benefit of and use by the client in accordance with the terms of the retainer. Spiire Australia Pty Ltd does not and shall not assume any responsibility or liability whatsoever to any third party arising out of any use or reliance by third party on the content of this document.

spiire
16 BRIDGE STREET BENDIGO
VICTORIA 3550 AUSTRALIA T 61 3 5448 2500
spiire.com.au ABN 55 050 029 635

YourLand Developments

Designed
S.SALHAN

Checked
B.IBBS - PE0007167

Authorised
B.WAREHAM

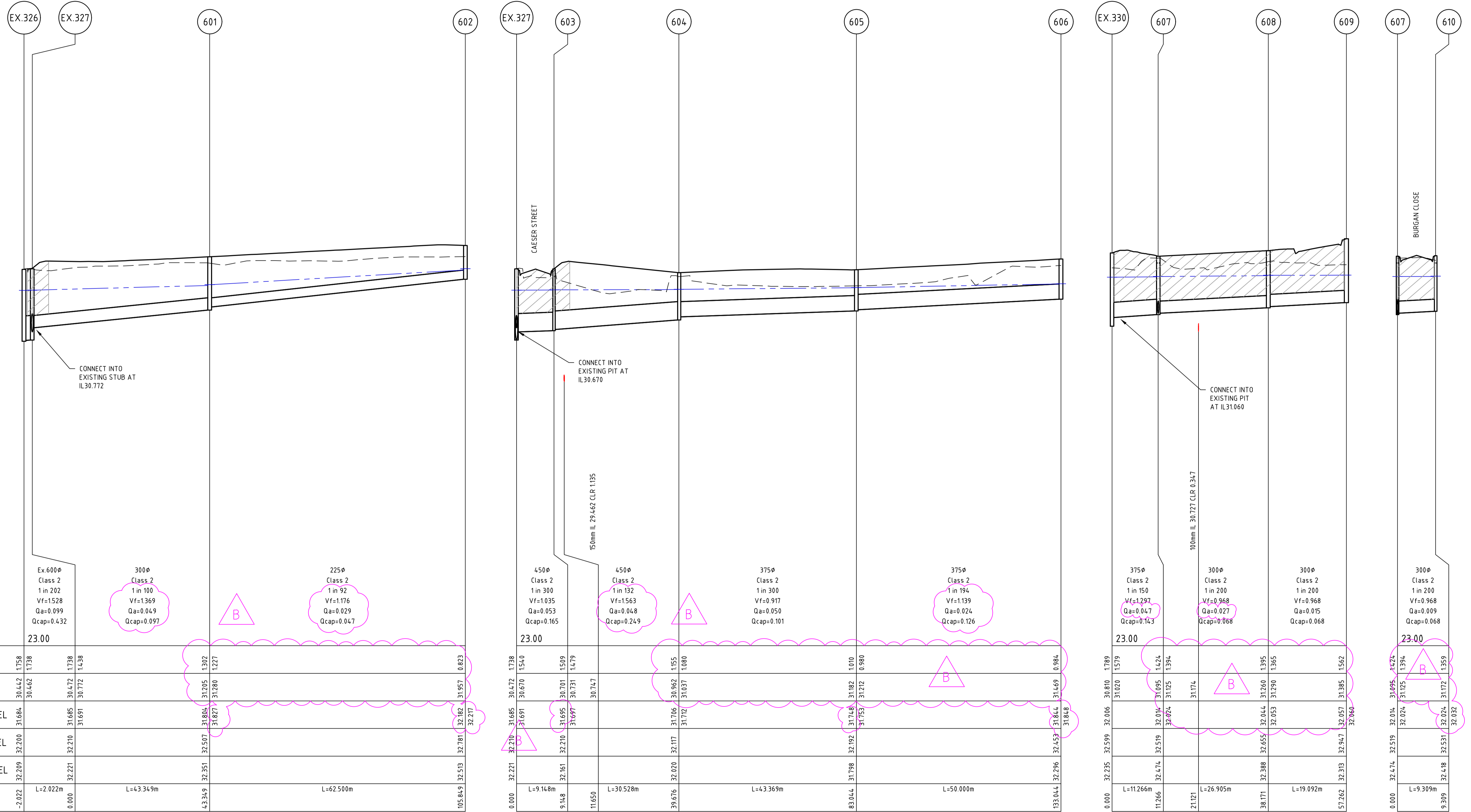
Date
14/11/22

**OFFICER CENTRAL
STAGE 6
ROAD AND DRAINAGE
INTERSECTION DETAILS**
CARDINIA SHIRE
YOURLAND

PRELIMINARY Dwg No **309134CR500** Rev **A**



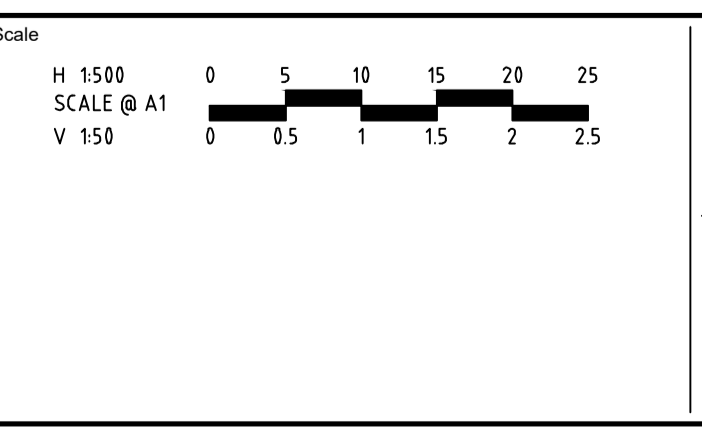
APPROVED FOR CONSTRUCTION
CARDINIA SHIRE COUNCIL
 Ref No.: S22-056 T1200411
 Sheet: 11 of 14
 Approved by: M.Patel - Dev Engineering
 CARDINIA SHIRE COUNCIL
 Date: Friday, 16 December 2022



	Ex. 600	601	602	EX.327	603	604	605	606	EX.330	607	608	609	607	610
Pipe Diameter	Ex. 600	300	225	450	450	375	375	375	375	300	300	300	300	300
Pipe Class	Class 2	Class 2	Class 2	Class 2	Class 2	Class 2	Class 2	Class 2	Class 2	Class 2	Class 2	Class 2	Class 2	Class 2
Pipe Grade	1 in 202	1 in 100	1 in 92	1 in 300	1 in 132	1 in 300	1 in 194	1 in 150	1 in 150	1 in 200	1 in 200	1 in 200	1 in 200	1 in 200
Velocity (m/s)	Vf=1.528	Vf=1.369	Vf=1.176	Vf=1.035	Vf=1.563	Vf=0.917	Vf=1.297	Vf=1.297	Vf=1.297	Vf=0.968	Vf=0.968	Vf=0.968	Vf=0.968	Vf=0.968
Pipe Flow (m ³ /s)	Qa=0.099	Qa=0.049	Qa=0.029	Qa=0.053	Qa=0.048	Qa=0.050	Qa=0.024	Qa=0.047	Qa=0.047	Qa=0.027	Qa=0.015	Qa=0.015	Qa=0.009	Qa=0.009
Pipe Capacity (m ³ /s)	Qcap=0.432	Qcap=0.097	Qcap=0.047	Qcap=0.165	Qcap=0.249	Qcap=0.101	Qcap=0.126	Qcap=0.143	Qcap=0.143	Qcap=0.068	Qcap=0.068	Qcap=0.068	Qcap=0.068	Qcap=0.068
DATUM RL	23.00													
DEPTH TO INVERT	30.442	30.462	31.804	30.472	30.701	30.962	31.748	31.020	31.020	31.174	31.260	31.260	31.172	31.172
DESIGN INVERT LEVEL	30.442	30.462	31.827	30.670	30.731	31.037	31.212	31.125	31.125	31.174	31.260	31.260	31.172	31.172
HYDRAULIC GRADE LEVEL	31.684	31.685	31.804	31.691	31.695	31.706	31.753	32.016	32.016	31.174	31.260	31.260	31.172	31.172
FINISHED SURFACE LEVEL	32.200	32.210	32.507	32.210	32.210	32.117	32.192	32.519	32.519	32.024	32.053	32.053	32.024	32.024
EXISTING SURFACE LEVEL	32.209	32.221	32.351	32.210	32.210	32.020	31.798	32.474	32.474	32.024	32.053	32.053	32.024	32.024
CHAINAGE	-2.022	0.000	4.3349	0.000	9.148	11.650	39.676	83.044	112.666	21.121	38.171	57.262	93.309	93.309

file name: 309134CR600.dwg, layout name: CR600, plotted by: Sushant, date: 14/11/2022 15:54, PM Sheet 1 of 14 Sheets

Rev	Amendments	Approved	Date
B	REVISED DRAINAGE NETWORK	B.W	14/11/22
A	PRELIMINARY ISSUE	B.W	28/06/22



System Certified

© Spiire Australia Pty Ltd All Rights Reserved
 This document is produced by Spiire Australia Pty Ltd solely for the benefit of and use by the client in accordance with the terms of the retainer. Spiire Australia Pty Ltd does not and shall not assume any responsibility or liability whatsoever to any third party arising out of any use or reliance by third party on the content of this document.

16 BRIDGE STREET BENDIGO
 VICTORIA 3550 AUSTRALIA T 61 3 5448 2500
 spiire.com.au ABN 55 050 029 635

Designed
S.SALHAN

Checked
B.IBBS - PE0007167

Authorised
B.WAREHAM

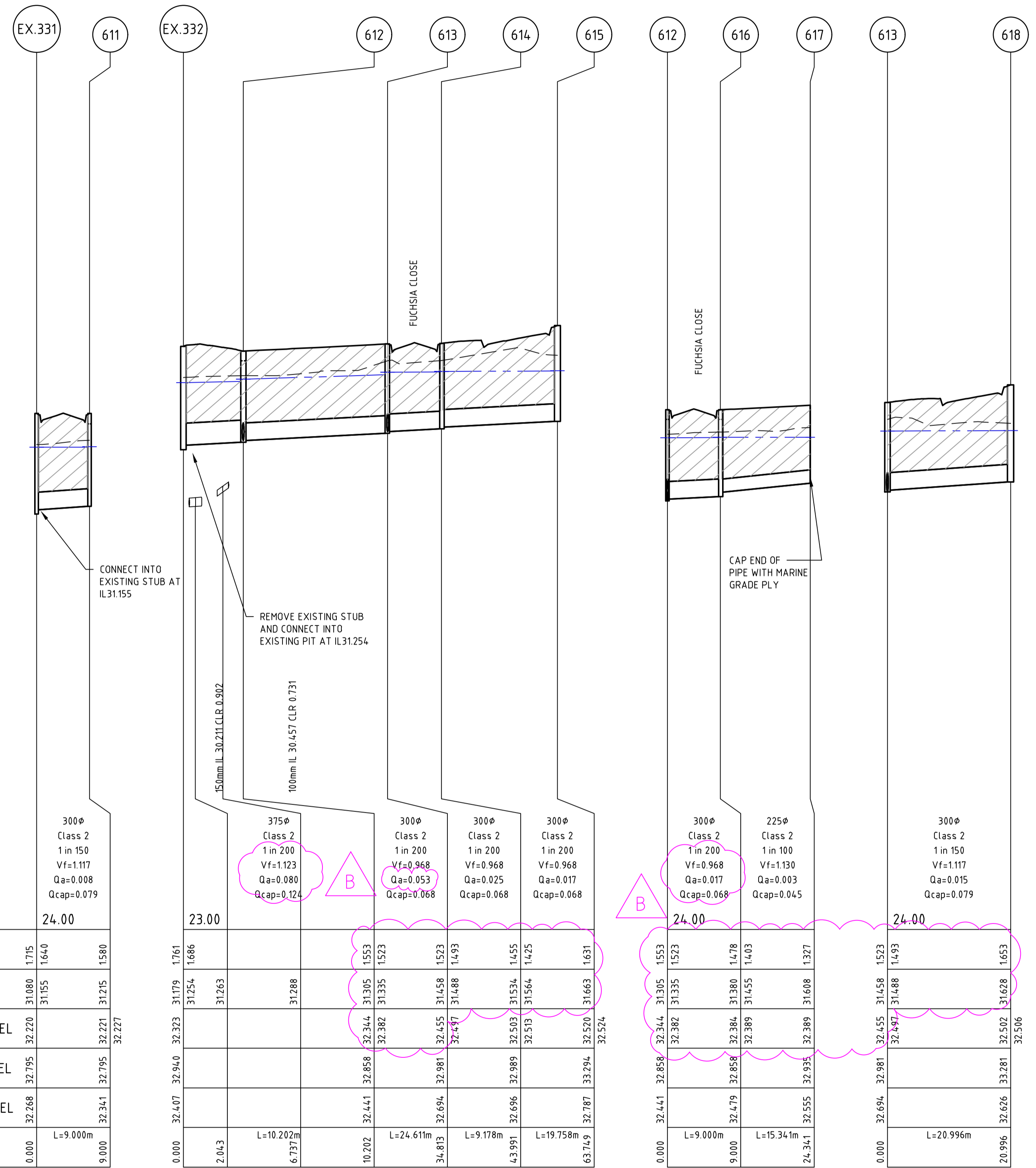
Date
14/11/22

**OFFICER CENTRAL
 STAGE 6
 ROAD AND DRAINAGE
 DRAINAGE LONG SECTIONS - SHEET 1
 CARDINIA SHIRE
 YOURLAND**

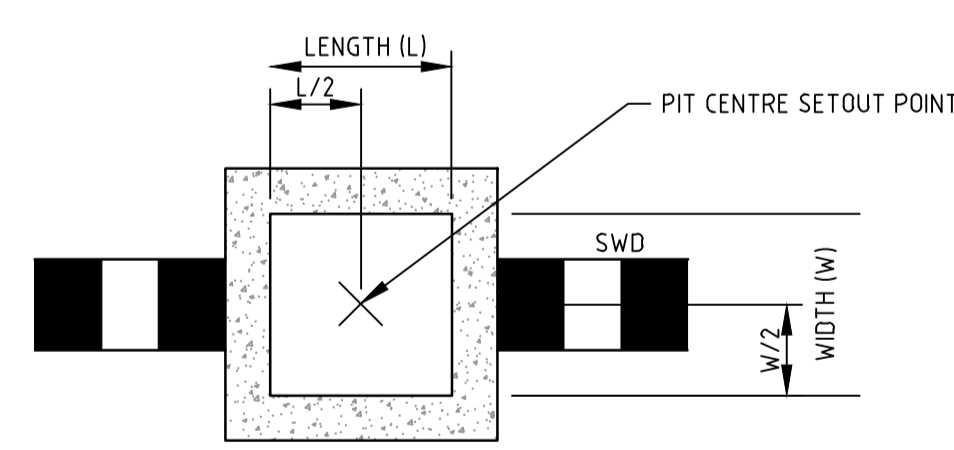
PRELIMINARY Drg No **309134CR600** Rev **B**



APPROVED FOR CONSTRUCTION
 CARDINIA SHIRE COUNCIL
 Ref No.: S22-056 T1200411
 Sheet: 12 of 14
 Approved by: M.Patel - Dev Engineering
 CARDINIA SHIRE COUNCIL
 Date: Friday, 16 December 2022



DRAINAGE PIT SCHEDULE										
NAME	PIT TYPE	INTERNAL		INLET		OUTLET		PIT		REMARKS
		WIDTH	LENGTH	DIA	INV LEVEL	DIA	INV LEVEL	FS LEVEL	DEPTH	
Ex.326	GRATED JUNCTION PIT	900	900	600	30.462			32.200	1.758	EXISTING PIT
Ex.327	JUNCTION PIT	900	900	300	30.772	600	30.472	32.210	1.738	EXISTING PIT
				450	30.670					
601	JUNCTION PIT	600	900	225	31.280	300	31.205	32.507	1.302	REFER TO EDMC 605
602	JUNCTION PIT	600	900	225	31.957	300	31.957	32.781	0.823	REFER TO EDMC 605
603	GRATED SIDE ENTRY PIT	600	900	450	30.731	450	30.701	32.210	1.509	REFER TO EDMC 603
604	JUNCTION PIT	600	900	375	31.037	450	30.962	32.117	1.155	REFER TO EDMC 605
605	JUNCTION PIT	600	900	375	31.212	375	31.182	32.192	1.010	REFER TO EDMC 605
606	JUNCTION PIT	600	900	375	31.469	375	31.469	32.453	0.984	REFER TO EDMC 605
Ex.330	JUNCTION PIT	600	900	375	31.020	450	30.810	32.599	1.789	EXISTING PIT
607	GRATED SIDE ENTRY PIT	600	900	300	31.125	375	31.095	32.519	1.424	REFER TO EDMC 603
				300	31.125					
608	JUNCTION PIT	600	900	300	31.290	300	31.260	32.655	1.395	REFER TO EDMC 605
609	JUNCTION PIT	600	900	300	31.385	300	31.385	32.947	1.562	REFER TO EDMC 605
610	GRATED SIDE ENTRY PIT	600	900	300	31.172	300	31.172	32.531	1.359	REFER TO EDMC 603
Ex.331	JUNCTION PIT	600	900	300	31.155	375	31.080	32.795	1.715	EXISTING PIT
611	GRATED SIDE ENTRY PIT	600	900	300	31.215	300	31.215	32.795	1.580	REFER TO EDMC 603
Ex.332	JUNCTION PIT	600	900	375	31.254	375	31.179	32.940	1.761	EXISTING PIT
612	GRATED SIDE ENTRY PIT	600	900	300	31.335	375	31.305	32.858	1.553	REFER TO EDMC 603
				300	31.335					
613	JUNCTION PIT	600	900	300	31.488	300	31.458	32.981	1.523	REFER TO EDMC 605
				300	31.488					
614	JUNCTION PIT	600	900	300	31.564	300	31.534	32.989	1.455	REFER TO EDMC 605, CLASS D LID
615	JUNCTION PIT	600	900	300	31.663	300	31.663	33.294	1.631	REFER TO EDMC 605
616	GRATED SIDE ENTRY PIT	600	900	225	31.455	300	31.380	32.858	1.478	REFER TO EDMC 603
617	ENDPIPE	0	0			225	31.608	32.935	1.327	ENDPIPE
618	JUNCTION PIT	600	900	300	31.628	300	31.628	33.281	1.653	REFER TO EDMC 605

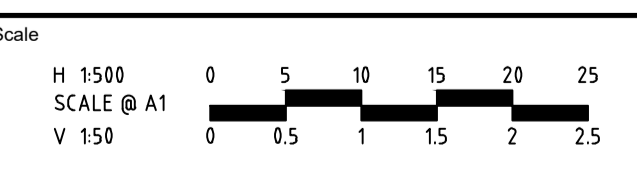


TYPICAL DRAINAGE PIT SETOUT POINT
 NOT TO SCALE

Pipe Diameter	300φ
Pipe Class	Class 2
Pipe Grade	1 in 150
Velocity (m/s)	Vf=1.117
Pipe Flow (m³/s)	Qa=0.008
Pipe Capacity (m³/s)	Qcap=0.079
DATUM RL	24.00

file name: 309134CR601.dwg, layout name: CR601, plotted by: Survey, S:\bbs, file location: \\spire\server\projects\309134CR601\309134CR601.dwg, plot date: 14/11/2022 15:4:PM, Sheet 1 of 14, Sheets

Rev	Amendments	Approved	Date
B	REVISED DRAINAGE NETWORK	B.W	14/11/22
A	PRELIMINARY ISSUE	B.W	28/06/22



System Certified
 © Spiire Australia Pty Ltd All Rights Reserved
 This document is produced by Spiire Australia Pty Ltd solely for the benefit of and use by the client in accordance with the terms of the retainer. Spiire Australia Pty Ltd does not and shall not assume any responsibility or liability whatsoever to any third party arising out of any use or reliance by third party on the content of this document.

16 BRIDGE STREET BENDIGO
 VICTORIA 3550 AUSTRALIA T 61 3 5448 2500
 spiire.com.au ABN 55 050 029 635

Designed: S.SALHAN
 Authorised: B.WAREHAM
 Checked: B.IBBS - PE0007167
 Date: 14/11/22

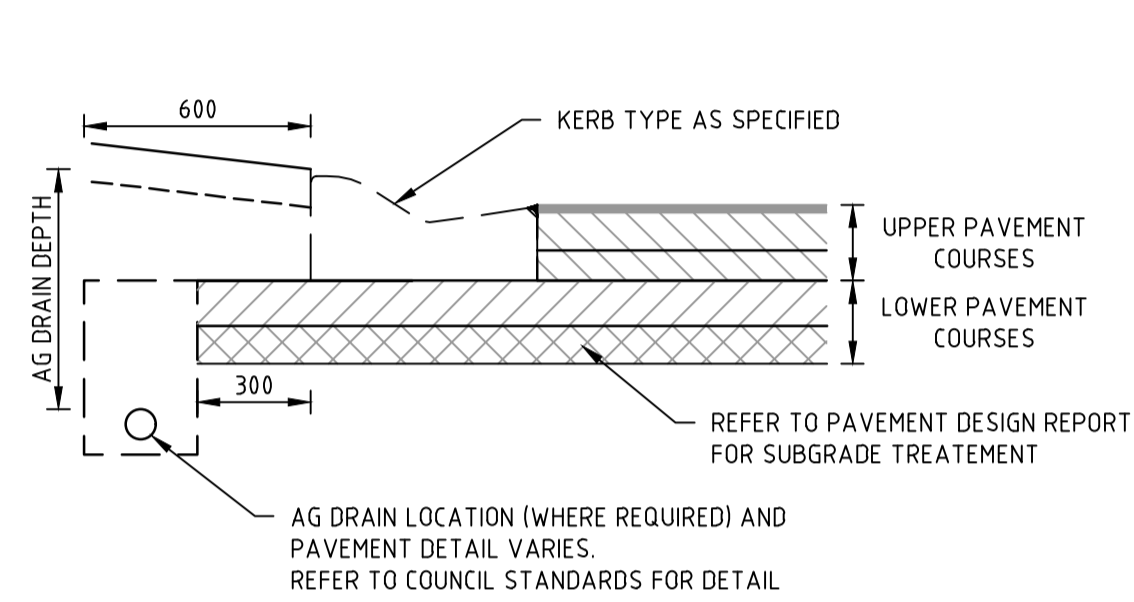
OFFICER CENTRAL
STAGE 6
ROAD AND DRAINAGE
DRAINAGE LONG SECTIONS - SHEET 2
 CARDINIA SHIRE
 YOURLAND
PRELIMINARY Drig No **309134CR601** Rev **B**

DESIGN PAVEMENT PROFILE

PAVEMENT LAYER	DESCRIPTION	DEPTH (mm)
		TYPE B* (ACCESS STREET Level 1)
ASPHALT WEARING COURSE	VICROADS SIZE 10 TYPE N CLASS C170 BINDER	30
ASPHALT BASE COURSE	VICROADS SIZE 10 TYPE N CLASS C170 BINDER	30
BITUMINOUS PRIME	NOMINAL	NOMINAL
BASE	VICROADS 20mm CLASS 2 CRUSHED ROCK OR EQUIVALENT	130
UPPER SUBBASE	VICROADS 20mm CLASS 3 CRUSHED ROCK OR BETTER, 20mm CLASS CC3 CRUSHED CONCRETE OR BETTER	100
LOWER SUBBASE	VICROADS CLASS 4 CRUSHED ROCK OR BETTER, CLASS CC3 CRUSHED CONCRETE OR BETTER	160
SUBGRADE	SILTY CLAY WITH DESIGN CBR OF 3.5%	
TOTAL PAVEMENT DEPTH		450

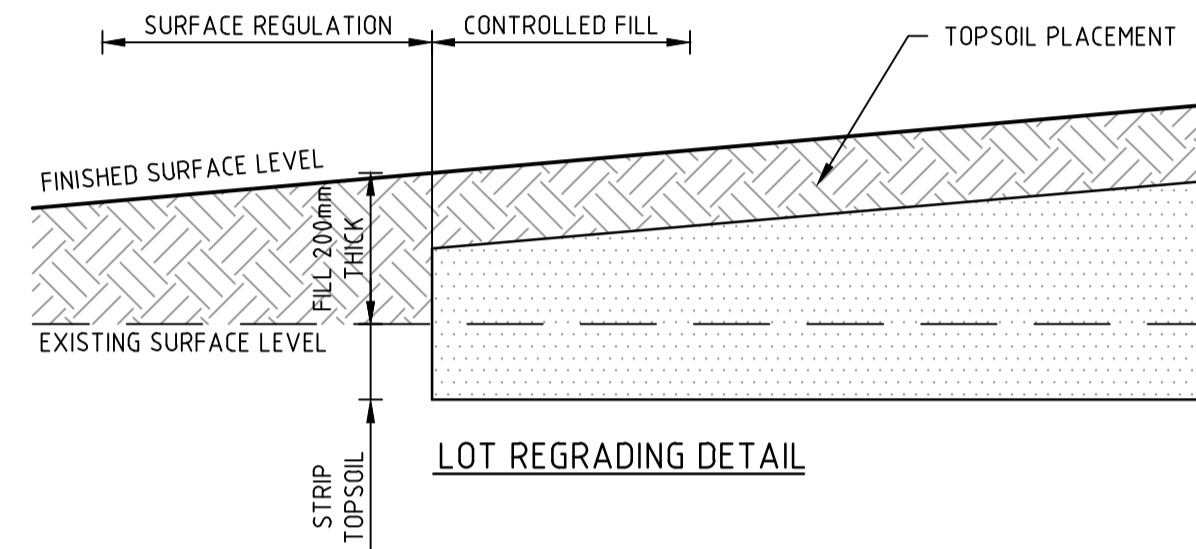
* REFER PAVEMENT PLAN FOR LOCATION OF PAVEMENT TYPES

ROAD NAME	TYPE
CAESAR STREET	B
FUCHSIA CLOSE	B
BURGAN CLOSE	B

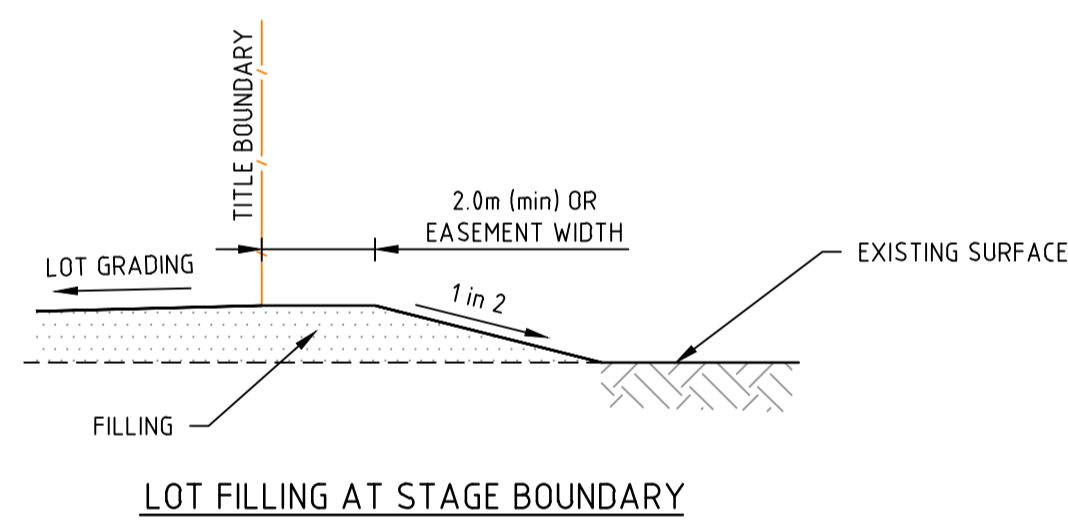


TYPICAL SUBSURFACE DRAIN DETAIL FOR NON-EXPANSIVE SUBGRADE
REFER TO AUTHORITY REQUIREMENTS FOR SPECIFIC DETAILS

NOT TO SCALE

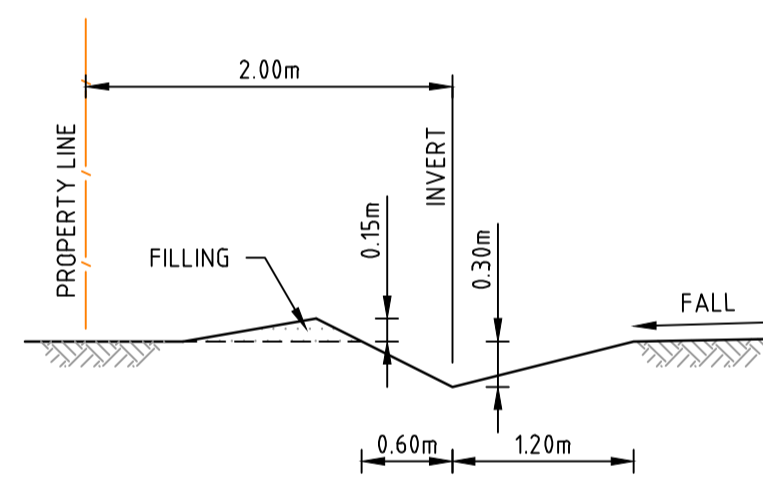


LOT REGRADING DETAIL

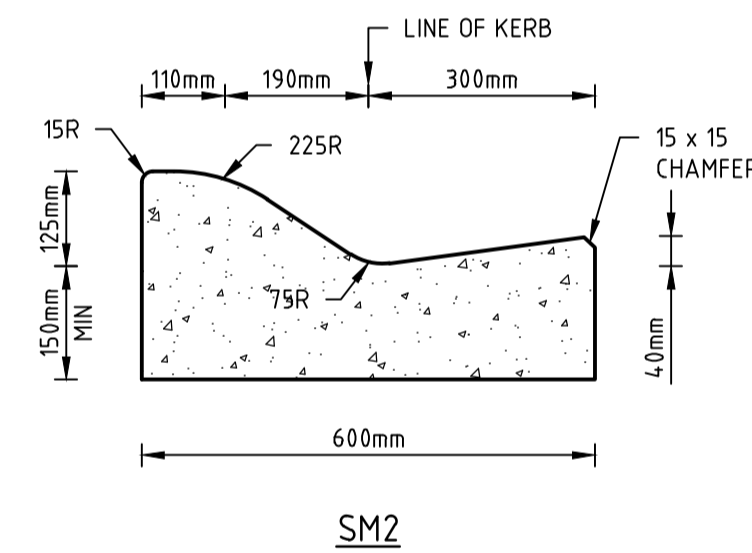


LOT FILLING AT STAGE BOUNDARY

NOT TO SCALE



TYPICAL CATCH DRAIN SECTION



STANDARD KERB PROFILES

NOTE: ALL KERB & CHANNEL AS PER GAA STD DRAWING EDCM 301



PAVEMENT PLAN

H: 1:1000 SCALE @ A1



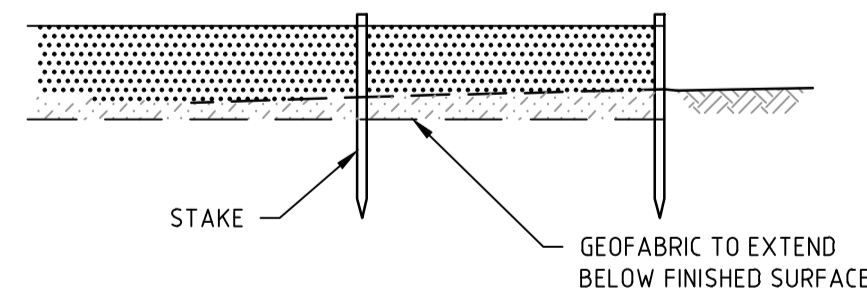
PAVEMENT DETAILS

THE PAVEMENT DESIGNS SHOWN HERE HAVE BEEN DESIGNED/PROVIDED BY **COFFEY SERVICES AUSTRALIA PTY LTD** WHO ARE RESPONSIBLE FOR THE GEOTECHNICAL WORK ON THIS PROJECT. SPIIRE IS NOT RESPONSIBLE FOR THE WORK OF **COFFEY SERVICES AUSTRALIA PTY LTD**.

THE DESIGN HAS BEEN EXTRACTED FROM THE **GEOTECHNICAL INVESTIGATION AND PAVEMENT DESIGN** REPORT ON "GEOTECHNICAL INVESTIGATION FOR **LOT 2, 45-61 RIX ROAD, OFFICER**" THIS DOCUMENT SHOULD BE REVIEWED TO ENSURE THAT THE DESIGN HAS BEEN ACCURATELY REPRODUCED.

A COPY OF THE DOCUMENT WILL BE PROVIDED ON REQUEST.

SPIIRE DOES NOT ACCEPT ANY RESPONSIBILITY FOR THE ACCURACY, ADEQUACY OR APPROPRIATENESS OF THE GEOTECHNICAL WORK AND PAVEMENT DESIGNS. ANY QUERIES IN RESPECT TO THE GEOTECHNICAL WORK AND PAVEMENT DESIGNS SHOULD BE ADDRESSED TO **COFFEY SERVICES AUSTRALIA PTY LTD** AND COPIED TO SPIIRE.



SILT CONTROL FOR LOTS
GEOFABRIC SILT FENCE

APPROVED FOR CONSTRUCTION
CARDINIA SHIRE COUNCIL
Ref No.: S22-056 T1200411
Sheet: 13 of 14
Approved by: M.Patel - Dev Engineering
CARDINIA SHIRE COUNCIL
Date: Friday, 16 December 2022

file name: 309134CR700.dwg, location: \\spire.com.au\spire\projects\2022\14-11-2022\154-PM Sheet 2 of 14 Streets

Rev	Description	By	Date
A	PRELIMINARY ISSUE	B.W	28/06/22
	Amendments	Approved	Date

Scale	
-------	--

System Certified

© Spiire Australia Pty Ltd All Rights Reserved

This document is produced by Spiire Australia Pty Ltd solely for the benefit of and use by the client in accordance with the terms of the retainer. Spiire Australia Pty Ltd does not and shall not assume any responsibility or liability whatsoever to any third party arising out of any use or reliance by third party on the content of this document.

16 BRIDGE STREET BENDIGO
VICTORIA 3550 AUSTRALIA T 61 3 5448 2500
spiire.com.au ABN 55 050 029 635

Designed: S.SALHAN
Authorised: B.WAREHAM
Checked: B.IBBS - PE0007167
Date: 14/11/22

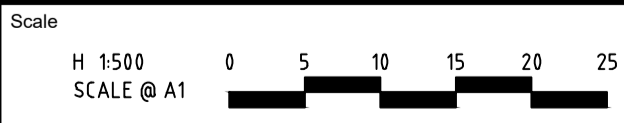
OFFICER CENTRAL
STAGE 6
ROAD AND DRAINAGE
PAVEMENT AND TYPICAL DETAILS
 CARDINIA SHIRE
 YOURLAND
PRELIMINARY Drg No: 309134CR700 Rev: A



APPROVED FOR CONSTRUCTION
 CARDINIA SHIRE COUNCIL
 Ref No.: S22-056 T1200411
 Sheet: 14 of 14
 Approved by: M. Patel - Dev Engineering
 CARDINIA SHIRE COUNCIL
 Date: Friday, 16 December 2022

file name: 309134CR800.dwg, layout: rmpc_C8000, plotted by: Saurabh, path: \\spire.com.au\spire\comau\spire\p03\309134CR800\309134CR800.dwg, date: 14/11/2022 15:4, PM Sheet: 3 of 14 Sheets

Rev	Amendments	Approved	Date
B	ADDED STREET SIGN	B.W	14/11/22
A	PRELIMINARY ISSUE	B.W	28/06/22



System Certified
 © Spiire Australia Pty Ltd All Rights Reserved
 This document is produced by Spiire Australia Pty Ltd solely for the benefit of and use by the client in accordance with the terms of the retainer. Spiire Australia Pty Ltd does not and shall not assume any responsibility or liability whatsoever to any third party arising out of any use or reliance by third party on the content of this document.

16 BRIDGE STREET BENDIGO
 VICTORIA 3550 AUSTRALIA T 61 3 5448 2500
 spiire.com.au ABN 55 050 029 635

Designed
 S.SALHAN
 Authorised
 B.WAREHAM
 Checked
 B.IBBS - PE0007167
 Date
 14/11/22

**OFFICER CENTRAL
 STAGE 6
 ROAD AND DRAINAGE
 SIGNAGE AND LINEMARKING**
 CARDINIA SHIRE
 YOURLAND
PRELIMINARY

 Dwg No
309134CR800
 Rev
B